



INSTRUCTIONS FOR:

ELECTRIC JERRY CAN PUMP

MODEL No: **TP80**

Thank you for purchasing a Sealey product. Manufactured to a high standard this product will, if used according to these instructions and properly maintained, give you years of trouble free performance.

IMPORTANT: PLEASE READ THESE INSTRUCTIONS CAREFULLY. NOTE THE SAFE OPERATIONAL REQUIREMENTS, WARNINGS & CAUTIONS. USE THE PRODUCT CORRECTLY AND WITH CARE FOR THE PURPOSE FOR WHICH IT IS INTENDED. FAILURE TO DO SO MAY CAUSE DAMAGE AND/OR PERSONAL INJURY AND WILL INVALIDATE THE WARRANTY. PLEASE KEEP INSTRUCTIONS SAFE FOR FUTURE USE.

1. SAFETY INSTRUCTIONS

- WARNING!** This pump must be used in accordance with Health & Safety, government, local authority, and water authority rules and regulations.
- ✓ Familiarise yourself with application and limitations, as well as the potential hazards peculiar to the pump.
- ✓ Maintain the pump in good condition. Keep the pump clean.
- ✓ Replace or repair damaged parts (use an authorised service agent). *Use genuine parts only. Non authorised parts may be dangerous and will invalidate the warranty.*
- ✗ **DO NOT** operate the pump if any parts are damaged or missing as this may cause failure and/or personal injury.
- ✗ **DO NOT** use the pump for any purpose other than for which it is designed.
- ✗ **DO NOT** operate pump out of liquid. The pump pick up area must be completely submerged during operation.
- ✗ **DO NOT** operate the pump during freezing temperatures. **DO NOT** leave the pump in liquid that may freeze.
- ✗ **DO NOT** carry the pump by its electrical cable, or outlet pipe.
- ✓ When not in use rinse pump, drain out any liquid and store in a frost free, safe location
- WARNING! DO NOT** allow uncontrolled discharge of contaminated water/harmful chemicals thus polluting the environment.

2. INTRODUCTION & SPECIFICATIONS

Easily transfers fluid from 5, 10 & 20ltr jerry cans. Compatible for use with petrol, diesel, kerosene and water. Hook storage design allows pump to attach onto jerry can and features a height adjustable control to accommodate different sized containers. Fitted with auto-stop feature to prevent overfilling. Operated by an electric motor powered by 2 x AA batteries (not included).

Model No:	TP80
Hose Length:700mm
Flow Rate:9ltr/min
Batteries:	2 x AA (not included)

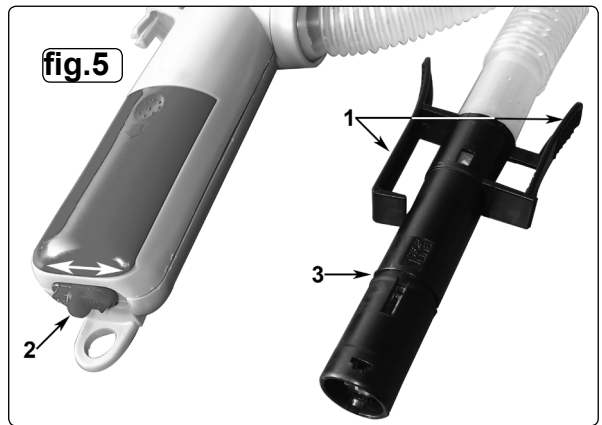


3. BATTERY FITTING

- 3.1. Slide battery compartment open as in fig.1.
- 3.2. Insert 2 x AA batteries as in fig.2, observing the correct polarity.
- 3.3. Replace sliding cover.
- 3.4. Removal of the batteries is the reverse of 3.1 to 3.3.



4. OPERATION



- 4.1. Remove the pump from the holder (fig.3), which may be hooked onto the handle of the jerry can using the hanging hook provided (fig.4)
- 4.2. Lower the pump stem into the jerry can until it rests on the base of the can.
- 4.3. Place the delivery nozzle into the receiving container; the nozzle may be either wedged or clipped in place using the attached moulded spigot.(see fig.5.1)
- 4.4. To start the pump, slide the switch (fig.5.2)
- 4.5. The pump will switch off automatically when the dispensed liquid reaches the stop line (fig.5.3) or manually at any point before then. The pump is fitted with an anti-vacuum valve to prevent syphoning.
- 4.6. **DO NOT** leave the pump unattended whilst it is running.



Environmental Protection.

Recycle unwanted materials instead of disposing of them as waste. All tools, accessories and packaging should be sorted, taken to a recycle centre and disposed of in a manner which is compatible with the environment.



Battery Removal

Remove the batteries as in section 3. Dispose of battery according to local government guidelines.

Under the Waste Batteries and Accumulators Regulations 2009, Jack Sealey Ltd are required to inform potential purchasers of products containing batteries (as defined within these regulations), that they are registered with Valpak's registered compliance scheme. Jack Sealey Ltd's Batteries Producer Registration Number (BPRN) is **BPRN00705**

NOTE: It is our policy to continually improve products and as such we reserve the right to alter data, specifications and component parts without prior notice.


IMPORTANT: No liability is accepted for incorrect use of product.


WARRANTY: Guarantee is 12 months from purchase date, proof of which will be required for any claim.

INFORMATION: Call us for a copy of our latest catalogue and promotions on 01284 757525 and leave your full name and address including postcode.



Sole UK Distributor, Sealey Group,
Kempson Way, Suffolk Business Park,
Bury St. Edmunds, Suffolk,
IP32 7AR

 01284 757500

 01284 703534



www.sealey.co.uk



sales@sealey.co.uk