

Thank you for purchasing a Sealey Product. Manufactured to a high standard this product will, if used according to these instructions and properly maintained, give you years of trouble free performance.

IMPORTANT: PLEASE READ THESE INSTRUCTIONS CAREFULLY. NOTE THE SAFE OPERATIONAL REQUIREMENTS, WARNINGS AND CAUTIONS. USE THIS PRODUCT CORRECTLY AND WITH CARE FOR THE PURPOSE FOR WHICH IT IS INTENDED. FAILURE TO DO SO MAY CAUSE DAMAGE OR PERSONAL INJURY AND WILL INVALIDATE THE WARRANTY. PLEASE KEEP INSTRUCTIONS SAFE FOR FUTURE USE.

1. SAFETY INSTRUCTIONS

- ❑ **WARNING!** Ensure Health & Safety, local authority and general workshop practice regulations are adhered to when using this stand.
- ✓ Use the stand in a suitable work area.
- ✓ Keep work area clean, uncluttered and ensure adequate lighting.
- x **DO NOT** use the stand for a purpose for which it was not designed.
- x **DO NOT** use stand on uneven ground.
- x **DO NOT** use stand if any part is significantly damaged.
- ✓ Ensure the SDA01 is securely fixed to the stand using the correct mounting brackets.
- ✓ Keep children and unauthorised persons away from the work area.

2. DESCRIPTION

Stand will support one or two SDA01 Air Panel Dryers allowing operator more time for other tasks. Fully adjustable for height and dryer angle. Supplied with air hoses and fittings. (If used with only one dryer the second outlet must be closed with a suitable 1/4" BSP plug - not supplied).

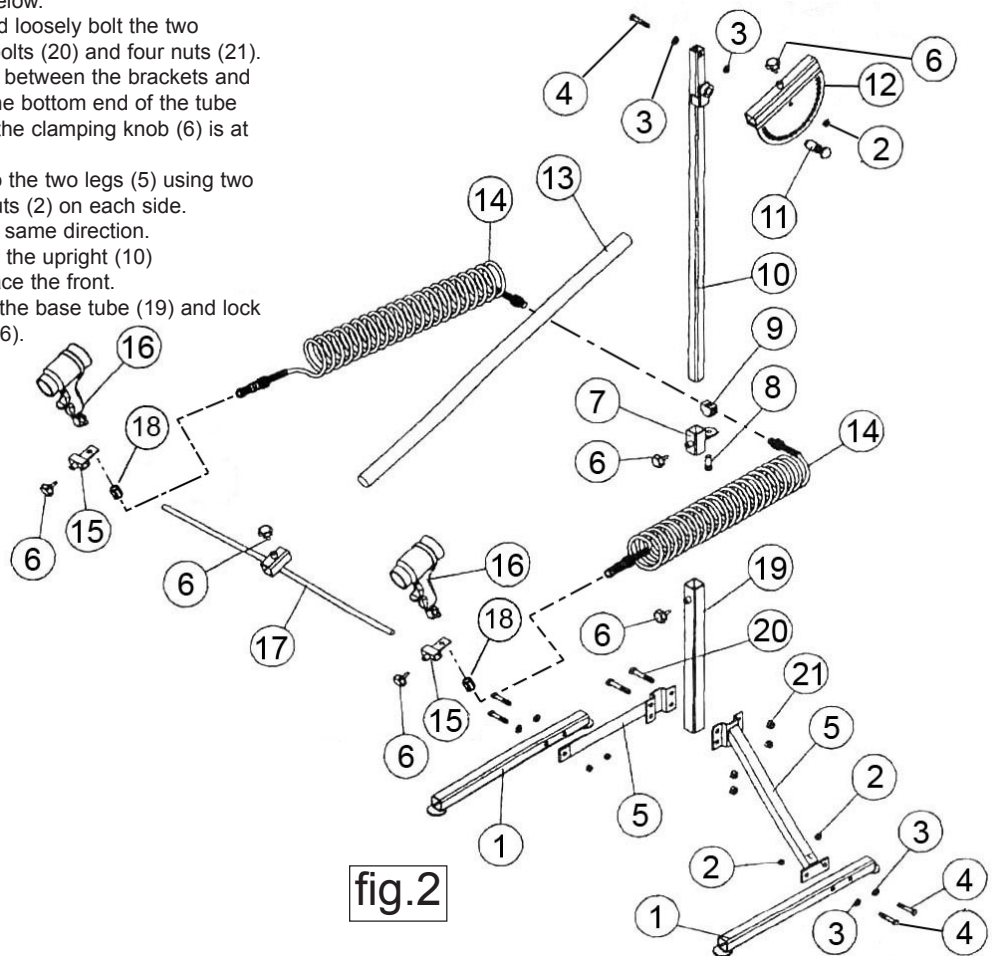
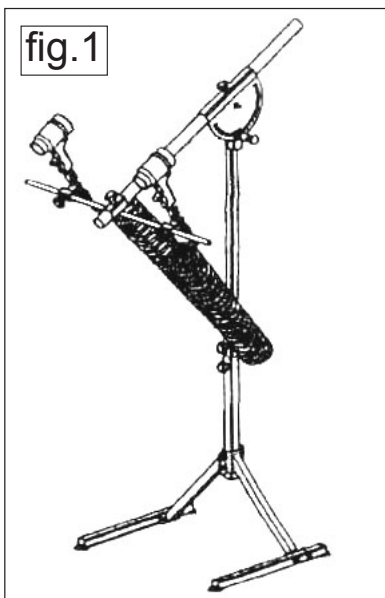
3. CONTENTS

Unpack the product and check the contents against the diagram. (Fig. 2). Should any items be missing or damaged contact your Sealey dealer. NOTE: GUNS (ITEM 16) NOT SUPPLIED.

4. ASSEMBLY

Note: All number references are to Fig.2 below.

- 4.1 Take the two leg components (5) and loosely bolt the two upper brackets together using four bolts (20) and four nuts (21).
- 4.2 Slide the square bottom tube (19) in between the brackets and further tighten the fixings to clamp the bottom end of the tube in position. Ensure that the hole for the clamping knob (6) is at the top of tube.
- 4.3 Attach the two base feet tubes (1) to the two legs (5) using two bolts (4) two washers (3) and two nuts (2) on each side. Ensure that the feet are offset in the same direction.
- 4.4 Slide the adjustable bracket (7) onto the upright (10) ensuring that the locking knob will face the front. Slide the upright assembly (10) into the base tube (19) and lock it at desired height using lock knob (6).
- 4.5 Attach the angle disc (12) to the upright (10) using the pivot bolt (4) two washers (3) and lock nut (2). Screw the sprung locking pin (11) to the bracket welded onto the upright (10) allowing the round ended pin to pass into one of the holes in the angle disc.
- 4.6 Slide the extended tube (13) into the angled disc (12) and secure with the locking knob (6).
- 4.7 Slide the lock shaft (17) onto the extended tube (13) and secure with a locking knob (6).
- 4.8 Attach the brackets (15), one on either side of the lock shaft (17) and secure using locking knobs (6).
- 4.9 Insert the threaded portion at the base of each SDA01 dryer handle (16) through the hole in each support bracket (15). Retain each dryer on each bracket by screwing an internally threaded joint (18) to clamp each dryer head in position.
- 4.10 Attach a coiled air hose (14) to each dryer head by screwing it into the other end of the internally threaded connector.
- 4.11 Place the air inlet block (9) onto the adjustable bracket (7). Pass the external thread of the connector (8) through the under side of the bracket and screw it into the underside of the block. Tighten the connector until the air inlet block is firmly clamped onto the bracket.
- 4.12 Screw the other end of the two air hoses (14) into either side of the air inlet block (9).
- 4.13 Tighten all bolts to conclude assembly.



NOTE: It is our policy to continually improve products and as such we reserve the right to alter data, specifications and component parts without prior notice. **IMPORTANT:** No liability is accepted for incorrect use of product. **WARRANTY:** Guarantee is 12 months from purchase date, proof of which will be required for any claim. **INFORMATION:** For a copy of our latest catalogue and promotions call us on 01284 757525 and leave your full name and address, including postcode.