



INSTRUCTIONS FOR:

# AIR NEEDLE SCALER COMPOSITE PISTOL TYPE

MODEL NO: **SA660**

Thank you for purchasing a Sealey product. Manufactured to a high standard, this product will, if used according to these instructions, and properly maintained, give you years of trouble free performance.



**IMPORTANT: PLEASE READ THESE INSTRUCTIONS CAREFULLY. NOTE THE SAFE OPERATIONAL REQUIREMENTS, WARNINGS & CAUTIONS. USE THE PRODUCT CORRECTLY AND WITH CARE FOR THE PURPOSE FOR WHICH IT IS INTENDED. FAILURE TO DO SO MAY CAUSE DAMAGE AND/OR PERSONAL INJURY AND WILL INVALIDATE THE WARRANTY. KEEP THESE INSTRUCTIONS SAFE FOR FUTURE USE.**

## 1. SAFETY

- WARNING!** Ensure health & safety, local authority, and general workshop practice regulations are adhered to when using this equipment.
- WARNING!** Disconnect from air supply before changing accessories or servicing.
- Maintain the needle scaler in good condition and replace any damaged or worn parts. *Use genuine parts only. Unauthorised parts may be dangerous and will invalidate the warranty.*
- WARNING!** Check correct air pressure is maintained and not exceeded. We recommend 90psi.
- Keep air hose away from heat, oil and sharp edges. Check air hose for wear before each use and ensure that all connections are secure.
- Only use needles which are specifically designed for use with a needle scaler.
- Wear approved safety eye/face shield, ear defenders, and hand protection.
- Maintain correct balance and footing. Ensure the floor is not slippery and wear non-slip shoes.
- Keep children and non essential persons away from the working area.
- DO NOT** use the needle scaler for a task it is not designed to perform.
- WARNING! DO NOT** use needle scaler if damaged or thought to be faulty. (Contact Sealey service agent).
- DO NOT** use needle scaler unless you have been instructed in its use by a qualified person.
- DO NOT** carry the needle scaler by the air hose, or yank the hose from the air supply.
- DO NOT** operate needle scaler if you are tired or under the influence of alcohol, drugs or intoxicating medication.
- DO NOT** carry needle scaler with your hand on the power trigger in order to avoid unintentional starting.
- DO NOT** direct air from the air hose at yourself or others.
- When not in use disconnect from air supply and store in a safe, dry, childproof location.

## 2. INTRODUCTION

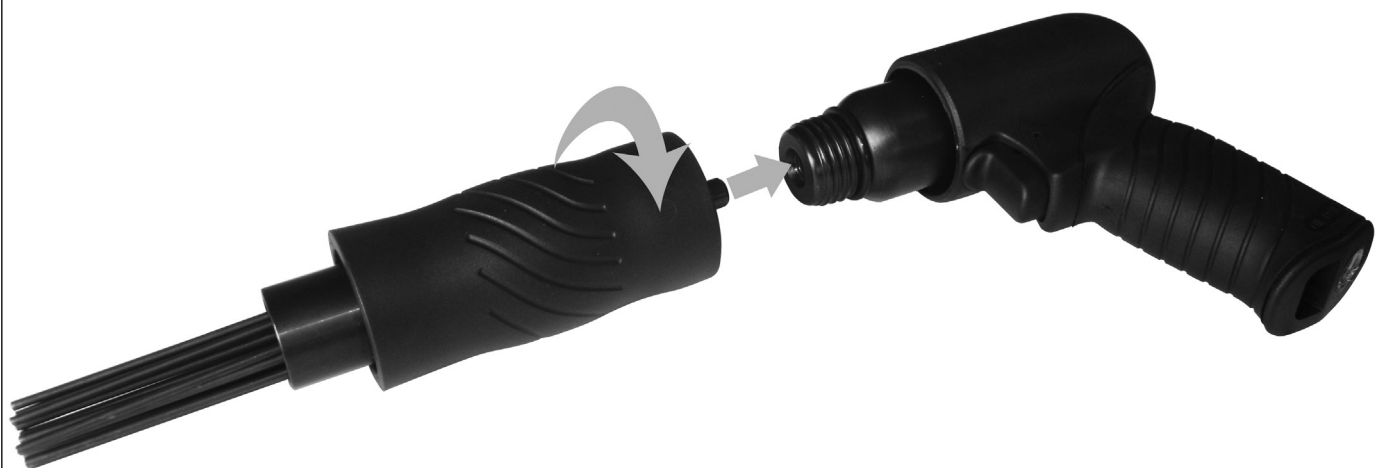
Suitable for cleaning heavy paint and rust scale from metal surfaces. Composite housing protects user from chill and helps to reduce vibration. Soft-grip handle and in-line handle provide added comfort and control. Spare needle sets are readily available.

## 3. SPECIFICATION

Stroke: .....	38mm
Free Speed: .....	4500bpm
Air Consumption: .....	12cfm
Operating Pressure: .....	90psi
Air Inlet Size: .....	1/4" BSP
Weight: .....	1.7kg
Noise Power: .....	107.1dB.A
Noise Pressure: .....	97.1dB.A
Vibration: .....	6.3m/s <sup>2</sup>
Uncertainty: .....	3.15m/s <sup>2</sup>

## 4. PREPARATION

fig.1



#### 4.1. Assembly

4.1.1. Screw the scaling head fully onto the body as indicated above in fig.1.

#### 4.2. Air Supply

**WARNING!** Ensure the air supply is clean and does not exceed 90psi while operating the needle scaler. Too high an air pressure and unclean air will shorten the product life due to excessive wear, and may be dangerous causing damage and/or personal injury.

4.2.1. Ensure needle scaler trigger is not depressed before connecting to the air supply.

4.2.2. You will require an air pressure of 90psi, and a minimum air flow of 12cfm.

4.2.3. Drain the air tank daily. Water in the air line will damage the needle scaler.

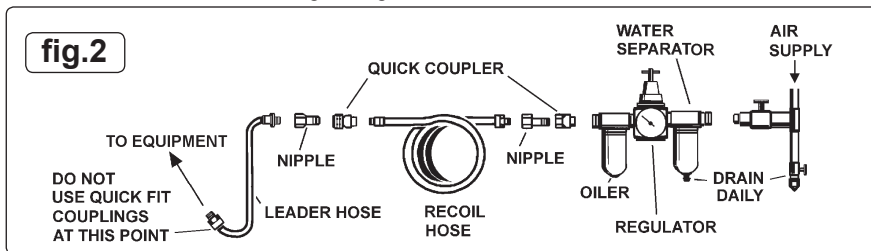
4.2.4. Clean air inlet filter weekly. Recommended hook-up procedure is shown in fig.2.

4.2.5. Line pressure should be increased to compensate for unusually long air hoses (over 8 metres). The minimum hose diameter should be 1/4" internal diameter and fittings must have compatible dimensions.

4.2.6. Keep hose away from heat, oil and sharp edges. Check hose for wear, and make certain that all connections are secure.

#### 4.3. Couplings

Vibration may cause failure if a quick change coupling is connected directly to the needle scaler. To overcome this, connect a leader hose to the needle scaler (Sealey ref: AH2R or AH2R/38). A quick change coupling may then be used to connect the leader hose to the air line recoil hose. See fig.2 & fig.3.



### 5. OPERATION

**WARNING!** Ensure you read, understand and apply Section 1 safety instructions.

5.1. Connect the needle scaler to the air supply as described in Section 3.

5.2. To start the scaler, depress the trigger.

**DO NOT** allow the needle scaler to free run for an extended period of time as this will shorten its life.

### 6. MAINTENANCE

**WARNING!** Disconnect needle scaler from air supply before servicing or performing maintenance. Replace or repair damaged parts. Use genuine parts only. Unauthorised parts may be dangerous and will invalidate the warranty.

6.1. To replace the needles, remove the large circlip from the back opening of the scaling head. Carefully ease the plastic retainer out of the sleeve against the spring pressure. Remove the needle supporter and needles. Remove the old needles from the needle supporter and replace them with a new set. Reassemble the scaling head in the reverse order of that described above. Screw the reassembled scaling head back onto the pistol body.

6.2. Lubricate the needle scaler daily with a few drops of Sealey air tool oil dripped into the air inlet.

6.3. Clean the needle scaler after use.

6.4. Loss of power or erratic action may be due to the following:

a) Excessive drain on the air line. Moisture or restriction in the air pipe. Incorrect size or type of hose connectors. To remedy check the air supply and follow instructions in Section 4.

b) Grit or gum deposits in the needle scaler may also reduce performance. Flush the needle scaler out with gum solvent oil or an equal mixture of SAE10 oil and paraffin. Allow to dry before use.

6.5. For a full service contact your local Sealey service agent.

6.6. When not in use, disconnect from air supply, clean needle scaler and store in a safe, dry, childproof location.



#### Environmental Protection

Recycle unwanted materials instead of disposing of them as waste. All tools, accessories and packaging should be sorted, taken to a recycling centre and disposed of in a manner which is compatible with the environment. When the product becomes completely unserviceable and requires disposal, drain off any fluids (if applicable) into approved containers and dispose of the product and the fluids according to local regulations.

**NOTE:** It is our policy to continually improve products and as such we reserve the right to alter data, specifications and component parts without prior notice.

**IMPORTANT:** No liability is accepted for incorrect use of this product.

**WARRANTY:** Guarantee is 12 months from purchase date, proof of which will be required for any claim.

**INFORMATION:** For a copy of our latest catalogue and promotions call us on 01284 757525 and leave your full name and address, including postcode.



# SEALEY

Sole UK Distributor, Sealey Group,  
Kempson Way, Suffolk Business Park,  
Bury St. Edmunds, Suffolk,  
IP32 7AR

01284 757500

01284 703534



www.sealey.co.uk



sales@sealey.co.uk

## **WARNING! – Risk of Hand Arm Vibration Injury.**

**This tool may cause Hand Arm Vibration Syndrome if its use is not managed adequately.**

This tool is subject to the vibration testing section of the Machinery Directive 2006/42/EC.

This tool is to be operated in accordance with these instructions.

**Measured vibration emission value (a): . . . . . 6.3 m/s<sup>2</sup>**

**Uncertainty value (k): . . . . . 3.15 m/s<sup>2</sup>**

*Please note that the application of the tool to a sole specialist task may produce a different average vibration emission. We recommend that a specific evaluation of the vibration emission is conducted prior to commencing with a specialist task.*

A health and safety assessment by the user (or employer) will need to be carried out to determine the suitable duration of use for each tool.

**NB:** Stated Vibration Emission values are type-test values and are intended to be typical.

Whilst in use, the actual value will vary considerably from and depend on many factors.

Such factors include; the operator, the task and the inserted tool or consumable.

**NB:** ensure that the length of leader hoses is sufficient to allow unrestricted use, as this also helps to reduce vibration.

*The state of maintenance of the tool itself is also an important factor, a poorly maintained tool will also increase the risk of Hand Arm Vibration Syndrome.*

### **Health surveillance.**

We recommend a programme of health surveillance to detect early symptoms of vibration injury so that management procedures can be modified accordingly.

### **Personal protective equipment.**

We are not aware of any personal protective equipment (PPE) that provides protection against vibration injury that may result from the uncontrolled use of this tool. We recommend a sufficient supply of clothing (including gloves) to enable the operator to remain warm and dry and maintain good blood circulation in fingers etc. Please note that the most effective protection is prevention, please refer to the Correct Use and Maintenance section in these instructions. Guidance relating to the management of hand arm vibration can be found on the HSC website [www.hse.gov.uk](http://www.hse.gov.uk) - Hand-Arm Vibration at Work.