



INSTRUCTIONS FOR:

ULTRASONIC LEAK DETECTOR

MODEL No: **PP4.V2**

Thank you for purchasing a Sealey product. Manufactured to a high standard this product will, if used according to these instructions and properly maintained, give you years of trouble free performance.

IMPORTANT: PLEASE READ THESE INSTRUCTIONS CAREFULLY. NOTE THE SAFE OPERATIONAL REQUIREMENTS, WARNINGS & CAUTIONS. USE THE PRODUCT CORRECTLY AND WITH CARE FOR THE PURPOSE FOR WHICH IT IS INTENDED. FAILURE TO DO SO MAY CAUSE DAMAGE AND/OR PERSONAL INJURY AND WILL INVALIDATE THE WARRANTY. PLEASE KEEP INSTRUCTIONS SAFE FOR FUTURE USE.

1. SAFETY INSTRUCTIONS

1.1. GENERAL SAFETY INSTRUCTIONS

- ✓ Familiarise yourself with the application, limitations and potential hazards of the tester. Also refer to the vehicle manufacturer's hand book.
- ✓ Ensure that the tester is in good condition before use.
- ✓ Only use recommended attachments and parts. To use unapproved items may be dangerous and will invalidate your warranty.
- ✓ If the tester receives a sharp knock or blow the unit must be checked by a qualified service agent before using.
- ✓ Keep children and unauthorised persons away from the work area.
- ✗ **DO NOT** disassemble the tester for any reason. The tester must only be checked by qualified service personnel.
- ☐ **WARNING!** To avoid damaging hearing, **DO NOT** set headphones volume too high.
- ✗ **DO NOT** drop the detector or transmitter.
- ✗ **DO NOT** tamper with the electronic circuit boards within the detector or transmitter.
- ✗ **DO NOT** use the tester outdoors, or in damp, or wet locations and **DO NOT** use in the vicinity of flammable liquids or gases.
- ✗ **DO NOT** use the detector or transmitter near any electrical appliances which emit electromagnetic waves, as this will give a false reading.
- ✗ **DO NOT** use the tester for a task for which it is not designed.
- ✓ When not in use, store the tester carefully in a safe, dry, childproof location.
- ✓ If the detector and transmitter are not to be used for long periods, remove the batteries before storing.

2. INTRODUCTION & SPECIFICATION

Quick and simple location of air, water or dust leaks. Place the transmitter in the vehicle and close the doors and windows. Trace the detector around outside of the screen, windows and door seals to locate the leak. Includes adjustable headphones for detector. Transmitter and detector powered by 9V Lithium batteries. Supplied in carry-case.



| | Detector | Transmitter |
|------------------------------|---------------------|--------------------|
| Operating Conditions: | 0°C ~ 40°C <80% RH | 0°C ~ 40°C <80% RH |
| Frequency Response: | 40kHz +/- 2kHz | - |
| Output Frequency: | - | 40kHz |
| Battery: | 9V | 9V |
| Size: | 192 x 50 x 30mm | 80 x 56 x 27.5mm |
| Weight: | 115g (incl battery) | 75g (incl battery) |

3. OPERATION

- ☐ **WARNING!** Ensure the headphone volume setting is set to low before operating the unit.

3.1. Operating in Passive Mode.

- 3.1.1. Insert the headphones plug into the jack (fig.1.7) and put on the headphones.
- 3.1.2. Press and hold down the TEST button (fig.1.6), the POWER LED will light (fig.1.4). A ticking tone will be heard through the headphones, adjust the volume of the headphones to a suitable level (fig.4). Adjust the sensitivity control to eliminate external noise (fig.2).
- 3.1.3. Holding down the TEST button, move the detector probe around the joint or seal of the suspected area. If a leak is detected the ticking tone frequency will increase and the "LEAK" LED will also illuminate (fig.1.5). The closer to the leak the higher the frequency of the ticking tone.

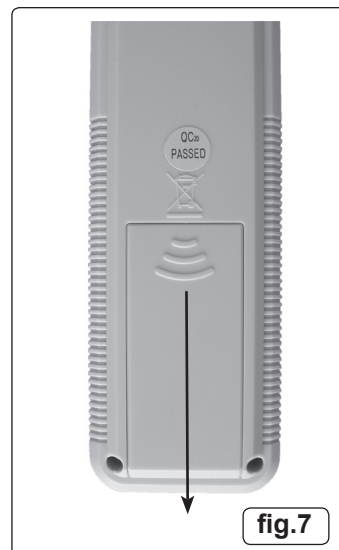
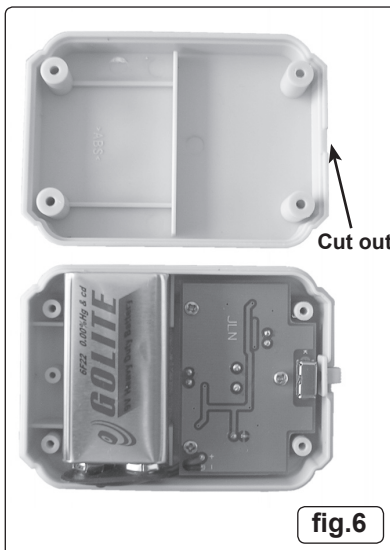
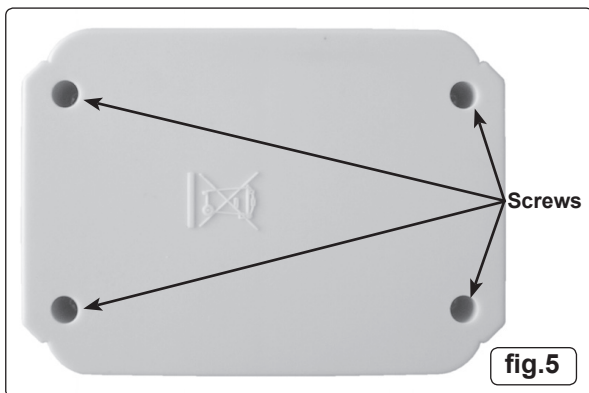
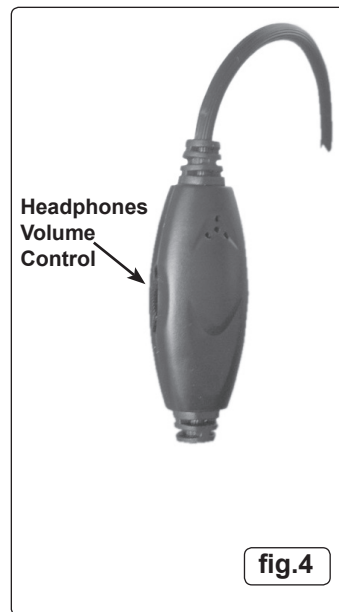
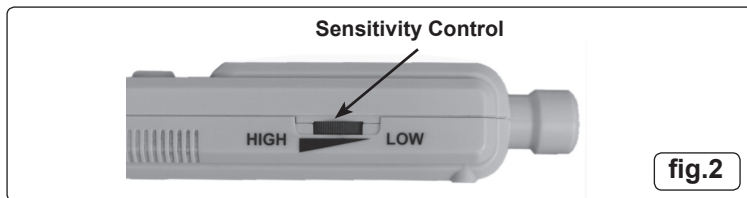
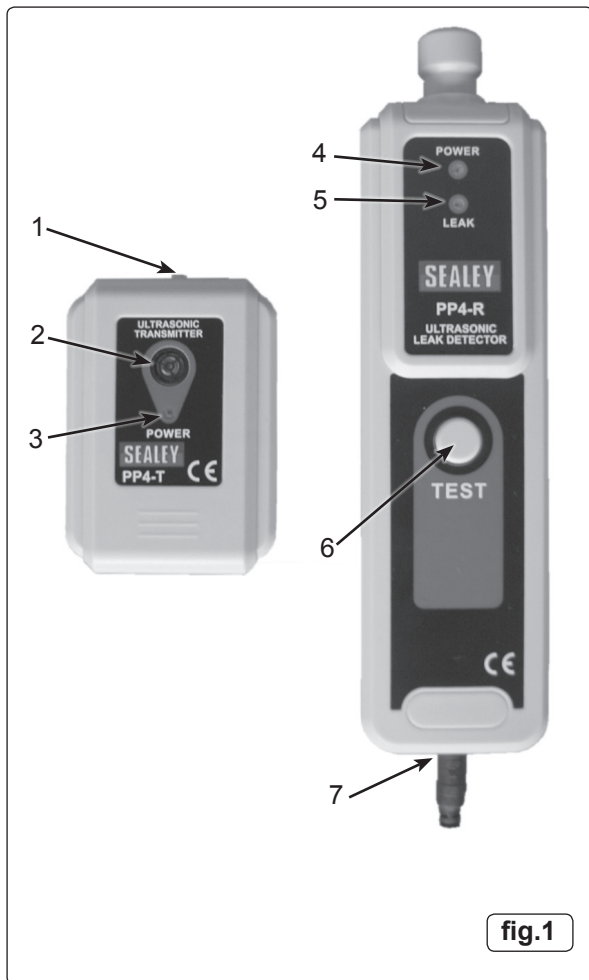
Note: When the PP4 detects a possible leak, move the probe around the suspected leak to determine whether the ultrasonic sound is from the leak or from other areas. Keep the probe as close as possible to the test area and move the probe slowly.

- 3.1.4. Repair the leak and recheck with the detector.
- 3.1.5. Once testing is complete release the TEST button.

Note: There are many factors involved in the ultrasonic leak detection, such as the pressure within the vessel, the size and shape of the hole, temperature etc. In some cases the ultrasonic sound caused by the leak may be very weak, so the sensitivity will need to be set at the highest level. If the ultrasonic sound is too intense, the ticking tone frequency will be high, the sensitivity should be adjusted down to an acceptable level. Noisy environments may also increase the ticking tone frequency, adjust the sensitivity down to an acceptable level.

3.2. Operating in Active Mode

- 3.2.1. Switch on the transmitter (see fig.1.1 & fig.3), the "POWER" LED will illuminate (fig.1.3).
- 3.2.2. Place the transmitter inside the compartment to be checked and close the compartment. The ultrasonic sound generated by the transmitter (fig.1.2) will leak through any orifice or faulty seal.
- 3.2.3. Scan the outside of the compartment with the detector. Any leaks from the compartment can be easily detected and pinpointed.
- 3.2.4. When the check is completed remove and turn off the transmitter.



4. MAINTENANCE

- 4.1. To change the battery on the detector, slide the cover off as shown in fig.7, replace the battery and cover.
- 4.2. To change the battery on the transmitter, remove the four screws on the rear of the unit (fig.5) and remove the back cover (fig.6). Replace the battery and the back cover, ensuring that the small cut out for the switch is at the switch end.
- 4.3. If the detector and transmitter are not used for long periods of time, remove the batteries.
- 4.4. Store the kit in its case and keep it in a dry safe childproof location.

Under the Waste Batteries and Accumulators Regulations 2009, Jack Sealey Ltd are required to inform potential purchasers of products containing batteries (as defined within these regulations), that they are registered with Valpak's registered compliance scheme. Jack Sealey Ltd's Batteries Producer Registration Number (BPRN) is BPRN00705

Environmental Protection.

Recycle unwanted materials instead of disposing of them as waste. All tools, accessories and packaging should be sorted, taken to a recycling centre and disposed of in a manner which is compatible with the environment.

NOTE: It is our policy to continually improve products and as such we reserve the right to alter data, specifications and component parts without prior notice.

IMPORTANT: No liability is accepted for incorrect use of this equipment.

WARRANTY: Guarantee is 12 months from purchase date, proof of which will be required for any claim.

INFORMATION: For a copy of our latest catalogue and promotions call us on 01284 757525 and leave your full name and address, including postcode.



Sole UK Distributor, Sealey Group,
Kempson Way, Suffolk Business Park,
Bury St. Edmunds, Suffolk,
IP32 7AR

01284 757500
01284 703534

www.sealey.co.uk
sales@sealey.co.uk