

Thank you for purchasing a Sealey product. Manufactured to a high standard this product will, if used according to these instructions and properly maintained, give you years of trouble free performance.

IMPORTANT: PLEASE READ THESE INSTRUCTIONS CAREFULLY. NOTE THE SAFE OPERATIONAL REQUIREMENTS, WARNINGS AND CAUTIONS. USE THE PRODUCT CORRECTLY AND WITH CARE FOR THE PURPOSE FOR WHICH IT IS INTENDED. FAILURE TO DO SO MAY CAUSE DAMAGE AND/OR PERSONAL INJURY AND WILL INVALIDATE THE WARRANTY. PLEASE KEEP INSTRUCTIONS SAFE FOR FUTURE USE.

1. CONTENTS

	Page No.
Section 2. General	1
Section 2.1 Identification	1
Section 2.2. Technical Data	1
Section 3. Safety	2
Section 4. Assembly	2
Section 5. Operating Instructions	3
Section 6. Maintenance/Inspection/Examination	3
Section 7. Owner's & Operator's Responsibilities	3
Section 8. Declaration of Conformity	4
Section 9. Parts List and Diagram	5

2. GENERAL

2.1. Identification

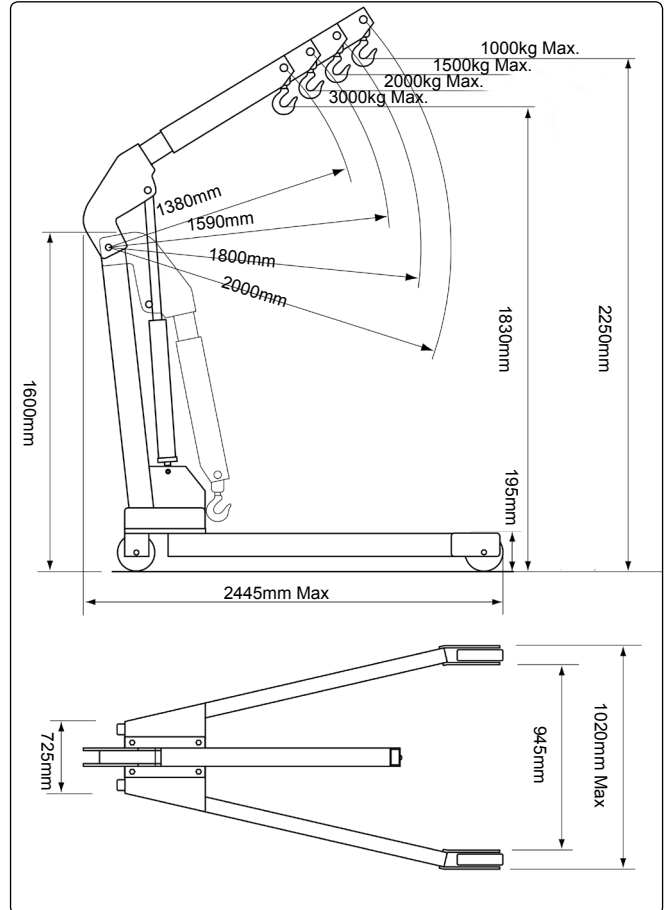
Supplier: Sealey Power Products,
 Kempson Way,
 Suffolk Business Park,
 Bury St Edmunds,
 Suffolk, IP32 7AR.

Model No: PH30

2.2. Technical Data. Rated Capacity

Working Load Limit (WLL) 3tonne (tested to 50% overload).

Max. lift height @ min. jib extension: 1830mm
 Max. lift height @ max. jib extension: 2250mm
 Height of frame: 195mm
 Max. length of frame: 2445mm
 Max. width of frame: 1020mm
 Overall height: 1600mm
 Width inside frame: 945mm
 Distance between rear wheel centres: 725mm
 Weight: 154kg



Lifting capacity:
 Position 1: 3000kg
 Position 2: 2000kg
 Position 3: 1500kg
 Position 4: 1000kg

Length of jib:
 Position 1: 1380mm
 Position 2: 1590mm
 Position 3: 1800mm
 Position 4: 2000mm

3. SAFETY

3.1. SAFETY

- ✓ **Keep** crane, lifting slings, support and beams in good working order and condition. Follow the inspection requirements as described in Section 6, Maintenance. *Take immediate action to repair or replace damaged parts by contacting your supplier. Ensure that all accessory lifting devices are suitably certified. If crane is damaged, remove from service immediately.*
- ✓ **Ensure the surface on which the crane is used is level, firm and capable of supporting the weight of the crane with maximum load - we recommend concrete. Never use the crane on tarmacadam or other soft surfaces, as the crane may sink in.**
- ✓ **Keep** children and unauthorised persons away from the working area.
- ✓ **Keep** working area clean and tidy, free from unrelated materials and ensure that there is adequate lighting.
- ✓ **Ensure** that load does not exceed the maximum lifting capacity of the crane. Overloading the crane is dangerous. Where appropriate, use only the lifting points recommended by the manufacturer of the item to be lifted, e.g. vehicle engine.
- ✓ **Before** lifting the load ensure that the crane jib is in the lowest practical position, that there are no obstacles which may snag the load whilst it is being lifted and that the area above the jib is clear.
- ✓ **To** avoid injury, be fully aware of your own and other persons locations in relation to the lifting, and lowering, of the load.
- ✓ **Keep** a sound footing and balance, and ensure the floor is not slippery, and wear non-slip footwear.
- ✓ **Ensure** jib extension locking pin and 'R' pin are in position before lifting.
- ✓ **Ensure** the centre of gravity always remains inside the crane base.
- x **DO NOT** harness the load at an angle or use any attachments not verified as fit for purpose.
- x **DO NOT** allow the load to swing during lifting.
- x **DO NOT** allow the load to drop suddenly. Lower load with care, ensuring that you are fully aware of the condition of the surface onto which the load is to be placed.
- x **DO NOT** load crane beyond its rated capacity for each specified jib extension position as indicated in Section 2 page 1. The capacity of the crane reduces as the jib is extended.
- x **DO NOT** position any part of your body beneath the load.
- x **DO NOT** use the crane to move or transport a load other than for repositioning (see 5.2.f). The crane is a lifting device only.
- x **DO NOT** apply any sideways pressure to any part of the crane during lifting or when a load is suspended.
- x **DO NOT** attempt to adjust the safety valve, which has been set and sealed by the manufacturer.
- x **DO NOT** use this crane to perform a task for which it is not designed.
- x **DO NOT** use whilst under the influence of drugs, alcohol or intoxicating medication.
- x **DO NOT** climb on the crane.
- ✓ **When** not in use store in a safe, dry, childproof area.
- ✓ **This crane is designed for lifting within a garage or workshop environment.**
- ☐ **WARNING! Failure to heed safety and warning instructions may result in damage and/or personal injury and will invalidate the warranty.**

4. ASSEMBLY

4.1. ASSEMBLY.

Note: Numbers in brackets refer to item numbers as shown in the parts diagram (Section 9, page 5).

- ☐ **WARNING** Certain of the assembly procedures require two persons to carry out safely.
- a) Assembly procedure is as follows. (Numbers in brackets refer to the parts diagram - please refer to this for appropriate positioning).
- b) Attach wheels (4) to the base (15) using washers, spring washers and nuts (24).
- c) Insert wheels (27) into the housings in the outer ends of the legs (13,14) using bolts (25) and securing with washers, spring washers and nuts (26).
- d) Slot the legs (13 & 14) into the base (15) and lock using the bolts (3). Ensure that the legs are each locked at the same length.
- e) Attach the post (18) to the base (15) using bolts, washers, spring washers and nuts.
- f) Attach supports (17) to the base (15) using bolts, washers, spring washers and nuts (5,23).
- g) Attach the tops of the supports (17) to the post (18) using bolts (7), washers, spring washers and nuts.
- h) Attach the base of the ram unit (1) to the lower fixing point of the post (18) using bolt (6), washer, spring washer and nut.
- i) Attach the jib (20) to the top of the post (18) using bolt (12), washer, spring washer and nut.
- j) Attach the piston head of the ram unit (1) to appropriate point on the jib (20) using bolt (11), washer, spring washer and nut.
- k) Slot the jib extension (21) into the jib (20) and secure using pin (9) and use 'R' pin (10) to secure this. Be sure to select the correct extension for the weight to be lifted.
- l) Attach the hook and chain (22) to the jib using bolt (2), washer, spring washer and nut (28).
- m) Open the release valve of the ram by turning the release valve (fig.1) anticlockwise. With the valve held open slightly pump the ram 10-20 times. This is necessary to flush the hydraulic system and purge any air that may be present.
- n) Pull the jib up slightly, close the release valve (turn clockwise) and pump the handle. The jib should now raise. Pump the jib all the way up and then lower it slowly by opening the release valve. This is to confirm that the oil level is correct. Close the release valve.
The crane is now ready for use. Ensure it is not damaged in any way. Should you experience any problems, contact your supplier immediately.

5. OPERATING INSTRUCTIONS



NOTE: ENSURE YOU HAVE READ AND UNDERSTOOD THE SAFETY INSTRUCTIONS AT THE BEGINNING OF THIS SECTION BEFORE YOU OPERATE THE CRANE.

5.2. OPERATION. (Refer to Section 6.2 regarding inspection before each and every use).

- a) Place handle into pump socket and pump, the jib will raise. Continue to pump until the jib reaches the height at which the load can be secured.
- b) Ensure that the legs are adjusted so that the lift is always performed within the wheelbase of the crane, and that the legs are secured at equal lengths.
- c) Connect the crane hook to the load using a suitable **certified** sling or support beam. Ensure you are aware of the load weight, and check that it is within the capacity of the crane (at the jib extension you are using) and the sling or support beam. When removing engines ensure you know the weight to be lifted. Use only the lifting points recommended by the vehicle manufacturer.
- d) Lift only from directly above the load. **WARNING! DO NOT LIFT THE LOAD AT AN ANGLE!**
- e) To lower load, turn release valve handle **VERY SLOWLY** in an anti-clockwise direction (fig.1). The release valve is spring-loaded to return to the closed position. **WARNING!** Do not allow the load to drop suddenly.
- f) The crane is not a transportation device but may be used to reposition the load being worked on. To do so, lower load and jib with care, to the lowest possible point before attempting to move. Do not try to move crane in a sideways direction. The crane is not designed to support the load indefinitely. When you have repositioned the load, lower the load onto a secure and appropriate working base, being fully aware of your own and other persons locations in relation to the lowering load.
- g) When load has been secured, remove lifting sling, support beam etc. and place crane in a safe location with jib fully lowered.

6. MAINTENANCE / EXAMINATION / INSPECTION

NOTE: The crane **MUST** be kept clean and dry and must be maintained in accordance with these instructions.

6.1. LUBRICATION.

- a) Oil all working parts monthly.
- b) The ram is filled with oil and should only require occasional topping up. **DO NOT** use brake fluid, as this will damage the hydraulic seals and invalidate the warranty. Proceed as follows (see fig.3):
 - a) Use only good quality hydraulic jack oil available from your supplier.
 - b) **DO NOT OVERFILL** as this will cause failure.
 - c) After filling with hydraulic oil, pump the crane up to its full height and pour off any excess oil.

6.2. INSPECTION AND EXAMINATION OF CRANE BEFORE USE.

- a) Before each use of the crane you must perform an inspection for leaks, damage, loose or missing parts.
- b) The crane must be examined immediately if it has been subject to an abnormal load or shock. It is recommended that such an examination is made by an authorised service agent.
- c) The owner and/or operator must be aware that repair of this equipment will require specialised knowledge and facilities. It is recommended that an annual examination of the workshop crane is made by an authorised service agent.
- d) Unauthorised parts may be dangerous and will invalidate the warranty.

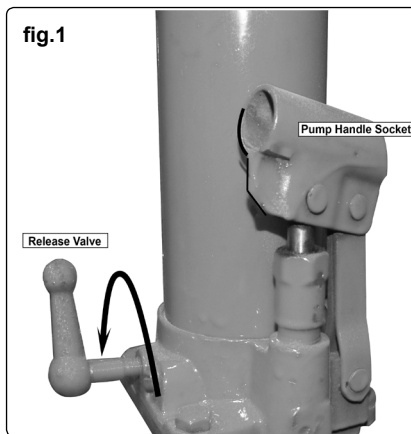
Note! See the Definition of 'Inspection' and 'Examination' below.

INSPECTION:

Looking at the crane for defects and checking the operation of the controls, limiting and indicating devices without loading the crane. This is much more than a check but does not normally require any part of the crane to be dismantled other than removal or opening of covers or housings.

EXAMINATION:

Verification that the crane can continue safely in service including a functional test of all safety devices i.e. limiting, indicating equipment, brakes, clutches, safety valves etc to verify that they operate within the required tolerances. An examination is more thorough than an inspection.



7. OWNER'S & OPERATOR'S RESPONSIBILITIES

The owner and/or operator shall study these instructions and retain them for future use.

- a) **Understanding instructions and warnings.**

The owner and/or operator shall understand the operating instructions and warnings before operating the crane. Warning information must be emphasised and understood. If the operator is not fluent in English, the product instructions and warnings must be read to, and discussed with, the operator in the operator's native language by the owner, making sure the operator understands the contents.
- b) **Damaged Cranes.**

Any crane which appears to be damaged, badly worn, or operates abnormally **MUST BE REMOVED FROM SERVICE!** It is recommended that necessary repairs be made by an authorised service agent.
- c) **End of service.**

Through years of normal wear, the crane will eventually become unserviceable. When this happens ensure the hydraulic oil is drained off and disposed of in accordance with local authority regulations.
- d) **STORAGE.**

Always store the crane fully closed so that the jib is in lowest position and the ram is closed.



Environmental Protection.

Recycle unwanted materials instead of disposing of them as waste. All tools, accessories and packaging should be sorted, taken to a recycle centre and disposed of in a manner which is compatible with the environment.

NOTE: It is our policy to continually improve products and as such we reserve the right to alter data, specifications and component parts without prior notice.
IMPORTANT: No liability is accepted for incorrect use of this product.

WARRANTY: Guarantee is 12 months from purchase date, proof of which will be required for any claim.

INFORMATION: For a copy of our latest catalogue and promotions call us on 01284 757525 and leave your full name and address, including postcode.



Sole UK Distributor, Sealey Group,
Kempson Way, Suffolk Business Park,
Bury St. Edmunds, Suffolk,
IP32 7AR



01284 757500



01284 703534



www.sealey.co.uk



sales@sealey.co.uk

8. DECLARATION of CONFORMITY



EC DECLARATION OF CONFORMITY

We the sole importers into the UK, hereby declare that the equipment described below

Description and Function: **Engine Crane 3tonne**

Model/Type: **PH30**

Manufacturing Date / Serial number (optional):

Manufacturer's authorised representative within the EC: **Jack Sealey Ltd. Kempson Way, Suffolk Business Park, Bury St. Edmunds, Suffolk, IP32 7AR**

Conforms to the requirements of the following Directives, as indicated.

- 2006/42/EC Machinery Directive
- 2006/95/EC Low Voltage Directive
- 2004/108/EC EMC Directive
- 93/68/EEC CE Marking Directive
- 2009/105/EC the Simple Pressure Vessels Directive
- 2000/14/EC Outdoor Noise Emissions Directive
- 2002/96/EC WEEE Directive
- 2002/95/EC RoHS Directive
- 97/23/EC Pressure Equipment Directive

And the following harmonised standard(s)

BS EN ISO 12100 part 1: 2003 + A1: 2009


BS EN 14121 part 1: 2007

BS EN ISO 12100 part 2: 2003 + A1: 2009

BS EN 1494: 2000 + A1: 2008

Additional technical standards and specifications (if applicable):

Technical file compiled by: **Jack Sealey Ltd.**

Signed: 

Date: **11-Jun-2012**

Place: **Bury St.Edmunds.**

Name: **Mark Sweetman**

Position: **Managing Director**

Being the responsible person appointed by the manufacturer.



Sealey Power Products, Kempson Way, Suffolk Business Park, Bury St. Edmunds, Suffolk, IP32 7AR

 01284 757500

 01284 703534

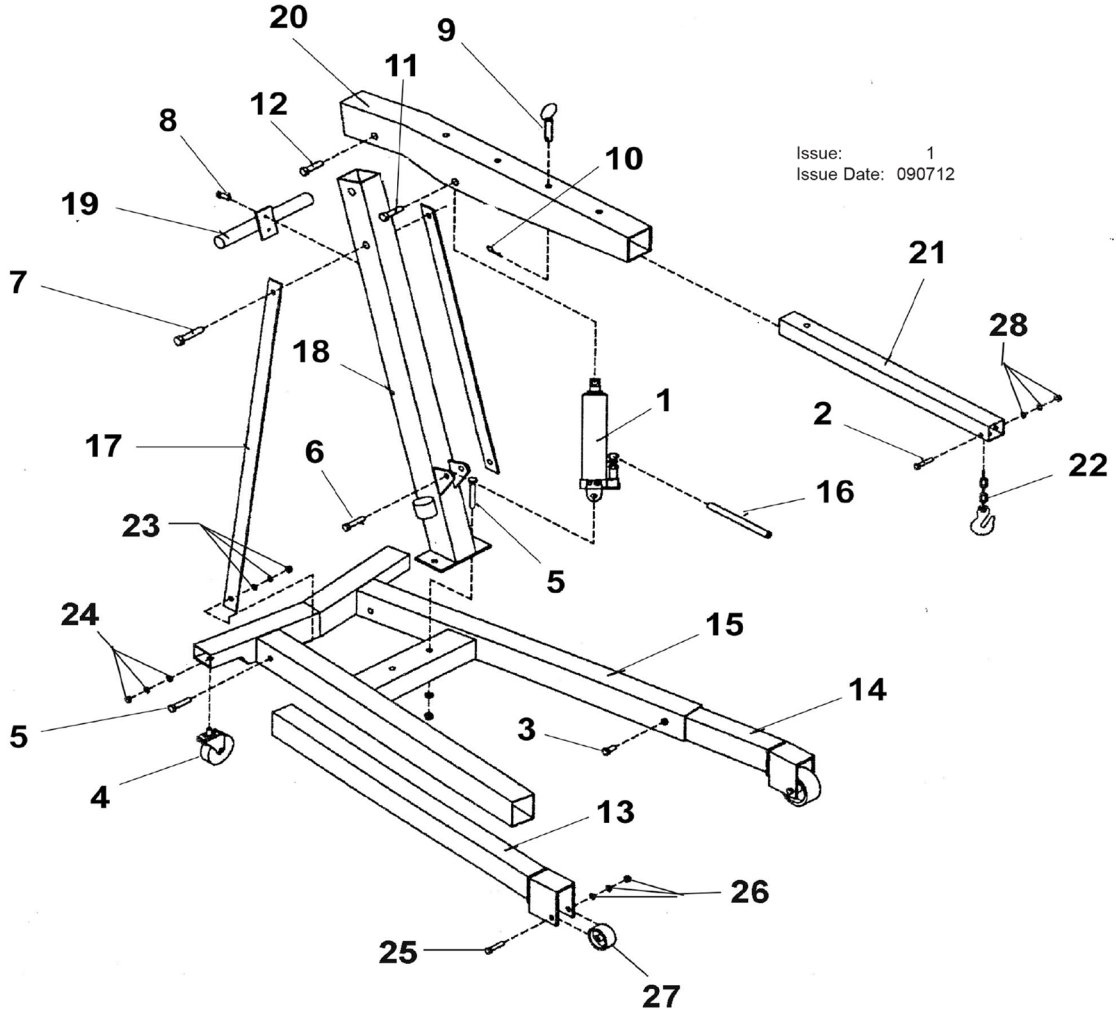
 sales@sealey.co.uk

 www.sealey.co.uk

9. PARTS LIST



PARTS FOR:
ENGINE CRANE 3 TONNE
MODEL: PH30



Issue: 1
Issue Date: 090712

ITEM	PART NO	DESCRIPTION	ITEM	PART NO	DESCRIPTION
1	PH30.01	HYDRAULIC UNIT	15	PH30.15	BASE
2	PH30.02	BOLT M12 X 90	16	PH30.16	JACK HANDLE
3	PH30.03	BOLT M12 X 30	17	PH30.17	BRACE
4	PH30.04	WHEEL	18	PH30.18	UPRIGHT
5	PH30.05	BOLT M16 X 110	19	PH30.19	HANDLE
6	PH30.06	BOLT M20 X 100	20	PH30.20	BOOM
7	PH30.07	BOLT M16 X 120	21	PH30.21	BOOM EXTENSION
8	PH30.08	BOLT M8 X 20	22	PH30.22	CHAIN & HOOK
9	PH30.09	PIN	23	PH30.23	WASHER/SPRING WASHER/NUT
10	PH30.10	'R' PIN	24	PH30.24	WASHER/SPRING WASHER/NUT
11	PH30.11	BOLT M22 X 130	25	PH30.25	BOLT
12	PH30.12	BOLT M20 X 130	26	PH30.26	WASHER/SPRING WASHER/NUT
13	PH30.13	LEG (RIGHT)	27	PH30.27	FRONT WHEEL
14	PH30.14	LEG (LEFT)	28	PH30.28	WASHER/SPRING WASHER/NUT

NOTE: It is our policy to continually improve products and as such we reserve the right to alter data, specifications and component parts without prior notice.

IMPORTANT: No liability is accepted for incorrect use of product.

WARRANTY: Guarantee is 12 months from purchase date, proof of which will be required for any claim.

INFORMATION: For a copy of our latest catalogue and promotions call us on 01284 757525 and leave your full name and address, including postcode.



Sole UK Distributor,
Sealey Group, Kempson Way,
Suffolk Business Park,
Bury St Edmunds, Suffolk, IP32 7AR

01284 757500
01284 703534

www.sealey.co.uk
sales@sealey.co.uk