

Thank you for purchasing a Sealey product. Manufactured to a high standard this product will, if used according to these instructions and properly maintained, give you years of trouble free performance.



IMPORTANT: PLEASE READ THESE INSTRUCTIONS CAREFULLY. NOTE THE SAFE OPERATIONAL REQUIREMENTS, WARNINGS & CAUTIONS. USE THE PRODUCT CORRECTLY AND WITH CARE FOR THE PURPOSE FOR WHICH IT IS INTENDED. FAILURE TO DO SO MAY CAUSE DAMAGE AND/OR PERSONAL INJURY, AND WILL INVALIDATE THE WARRANTY. PLEASE KEEP INSTRUCTIONS SAFE FOR FUTURE USE.

1. SAFETY INSTRUCTIONS

1.1. ELECTRICAL SAFETY

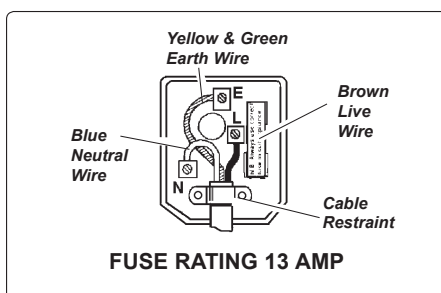
WARNING! It is the responsibility of the owner and the operator to read, understand and comply with the following: You must check all electrical products, before use, to ensure that they are safe. You must inspect power cables, plugs, sockets and any other connectors for wear or damage. You must ensure that the risk of electric shock is minimised by the installation of appropriate safety devices. A Residual Current Circuit Breaker (RCCB) should be incorporated in the main distribution board. We also recommend that a Residual Current Device (RCD) is used. It is particularly important to use an RCD with portable products that are plugged into a supply which is not protected by an RCCB. If in any doubt consult a qualified electrician. You may obtain a Residual Current Device by contacting your Sealey dealer.


You must also read and understand the following instructions concerning electrical safety.

- 1.1.1. The **Electricity at Work Act 1989** requires that all portable electrical appliances, if used on business premises, are tested by a qualified electrician, using a Portable Appliance Tester (PAT), at least once a year.
- 1.1.2. The **Health & Safety at Work Act 1974** makes owners of electrical appliances responsible for the safe condition of those appliances and the safety of the appliance operators. **If in any doubt about electrical safety, contact a qualified electrician.**
- 1.1.3. Ensure that the insulation on all cables and on the appliance is safe before connecting it to the power supply. See 1.1.1. and 1.1.2. and use a Portable Appliance Tester.
- 1.1.4. Ensure that cables are always protected against short circuit and overload.
- 1.1.5. Regularly inspect power supply cables and plugs for wear or damage and check all connections to ensure that none is loose.
- 1.1.6. **Important:** Ensure that the voltage marked on the appliance matches the power supply to be used and that the plug is fitted with the correct fuse - see fuse rating at right.
- 1.1.7. **DO NOT** pull or carry the appliance by the power cable.
- 1.1.8. **DO NOT** pull the plug from the socket by the cable.
- 1.1.9. **DO NOT** use worn or damaged cables, plugs or connectors. Immediately have any faulty item repaired or replaced by a qualified electrician. When a BS 1363/A UK 3 pin plug is damaged, cut the cable just above the plug and **dispose of the plug safely.**

Fit a new plug according to the following instructions (UK only).

- a) **Connect the GREEN/YELLOW earth wire to the earth terminal 'E'.**
- b) **Connect the BROWN live wire to the live terminal 'L'.**
- c) **Connect the BLUE neutral wire to the neutral terminal 'N'.**
- d) **After wiring, check that there are no bare wires, that all wires have been correctly connected, that the cable outer insulation extends beyond the cable restraint and that the restraint is tight.**



Double insulated products, which are always marked with this symbol , are fitted with live (brown) and neutral (blue) wires only. To rewire, connect the wires as indicated above - **DO NOT** connect either wire to the earth terminal.

- 1.1.10. Products which require more than 13 amps are supplied without a plug. In this case you must contact a qualified electrician to ensure that a suitably rated supply is available. We recommend that you discuss the installation of an industrial round pin plug and socket with your electrician.
- 1.1.11. If an extension reel is used it should be fully unwound before connection. A reel with an RCD fitted is preferred since any appliance plugged into it will be protected. The cable core section is important and should be at least 1.5mm², but to be absolutely sure that the capacity of the reel is suitable for this product and for others which may be used in the other output sockets, we recommend the use of 2.5mm² section cable.

1.2. GENERAL SAFETY

- ✓ Disconnect the cleaner from the power supply before servicing, changing accessories, or performing any maintenance.
- ✓ Use only genuine parts and accessories. *Unauthorised parts and accessories may be dangerous and will invalidate your warranty.*
- ✓ Maintain the cleaner in good condition. Use authorised agent for servicing. Keep machine clean, but **DO NOT use solvents.**
- ✓ For dry vacuuming ensure the cloth filter is firmly in place before operating the cleaner.
- ✗ **DO NOT** operate the unit without a filter in place. **Using the cleaner without a filter will result in motor failure and will invalidate your warranty.**
- ✓ Wear protective clothing and gloves.
- ✗ **DO NOT** allow children or untrained persons to operate the cleaner.
- ✗ **DO NOT** place attachments close to your face (especially eyes, ears, etc). Do not point the hose end at other persons or animals.
- ▲ **DANGER! DO NOT vacuum hot or glowing ash, cigarette ends, inflammable, explosive, corrosive or other dangerous substances.**
- ✗ **DO NOT** leave machine running unattended. Turn power supply OFF, and **DO NOT** leave the vicinity until motor has come to a complete stop.
- ✗ **DO NOT** operate the cleaner while under the influence of drugs, alcohol or impairing medication, or if you are tired.
- ✗ **DO NOT** use the cleaner in the rain or in very damp conditions.
- ✗ **DO NOT** use the cleaner for a task it is not designed to perform.
- ✓ When not in use, store the cleaner in a safe, dry, childproof location.

2. SPECIFICATION

1	Model No:	PC100
2	Motor Power:	1000W
3	Supply:	230V
4	Air Flow:	90m ³ /hr
5	Drum Size:	10ltr
6	Weight:	3.3kg
7	Vac Accessories Ø:	35mm
8	Filter Type:	Cloth & Foam
9	Replacement Cloth Filter	PC100.ACC4
10	Replacement Foam Filter	PC100.ACC2

3. INTRODUCTION & SPECIFICATION

3.1. Introduction.

High powered, lightweight, wet and dry unit with blower facility. Constructed from high impact composite with tool and hose stowage points on head. Ideal for vehicle cleaning and general workshop use. Supplied with crevice and floor tools, cloth and foam filters, 2mtr cable and 3-pin plug.

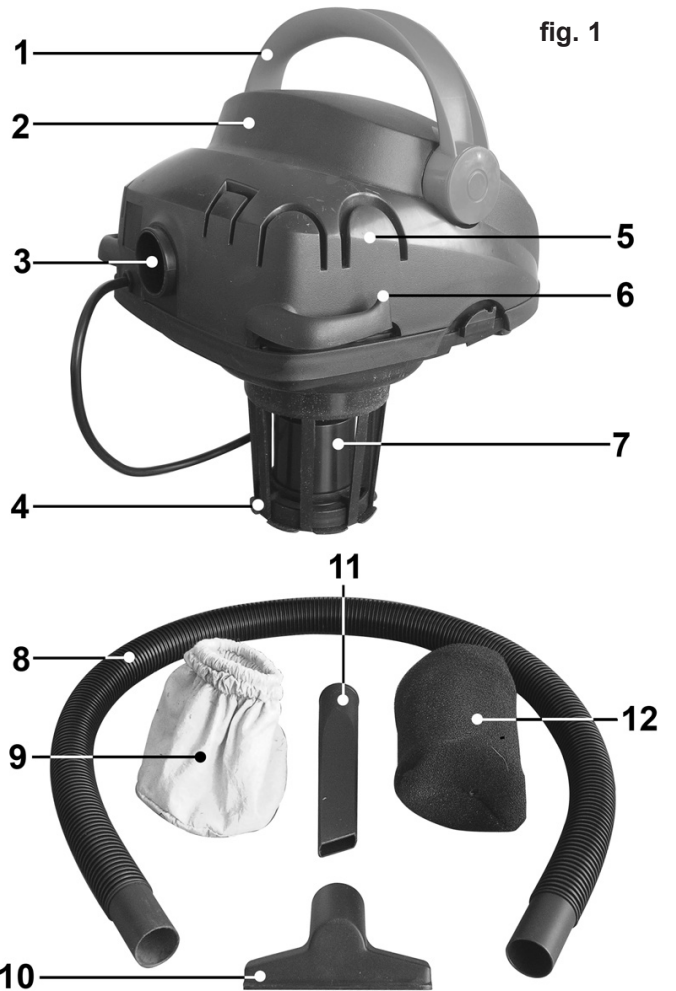


fig. 1

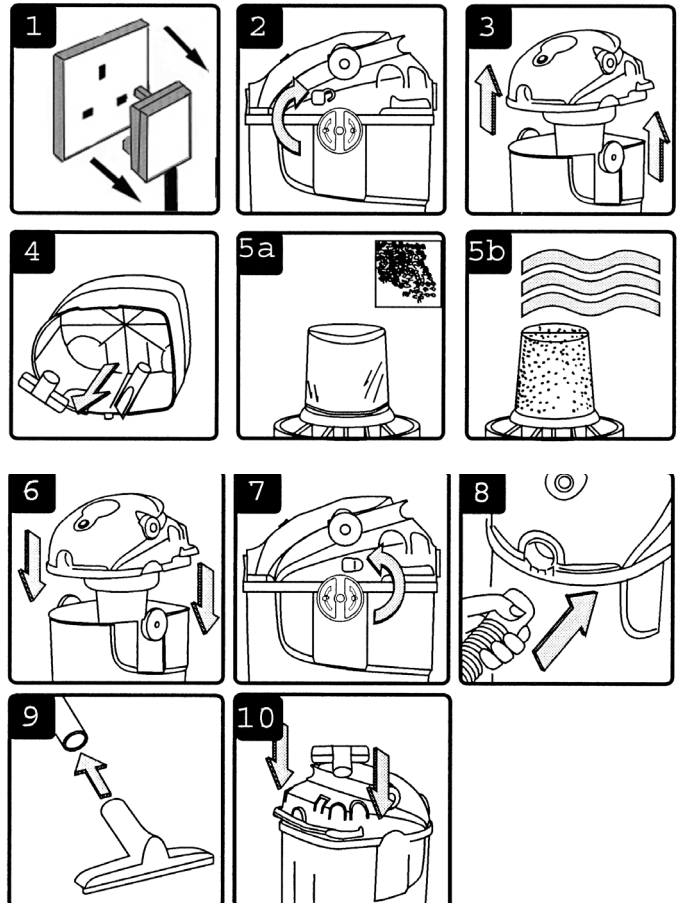
Item	Description	Item	Description
1	Handle.	9	Reusable Cloth Filter.
2	Power Head.	10	Brush.
3	Blower Port.	11	Crevice Tool.
4	Filter Cage.	12	Foam Filter.
5	Accessory Storage.	13	On/Off Switch.
6	Cable Stowage Hook.	14	Vacuum Port.
7	Safety Float Valve.	15	Locking Knob.
8	Flexible Vacuum Hose.	16	10ltr Container.

4. CONTENTS & ASSEMBLY

- 4.1. Ensure the mains plug is disconnected. Do not connect to the mains power until the unit is correctly assembled and prepared for the cleaning task in hand.
- 4.2. Rotate the two locking knobs on either side of the power head clockwise to release the head.
- 4.3. Lift the power head off the container and turn it upside down ready to fit a filter.
- 4.4. Remove the contents from inside the container and check the items against the contents list above. If anything is missing or damaged please contact your supplier immediately.
- 4.5a. For dry vacuuming fit the reusable cloth filter over the filter cage.
- 4.5b. For wet vacuum remove the cloth filter and put the foam filter over the filter cage.

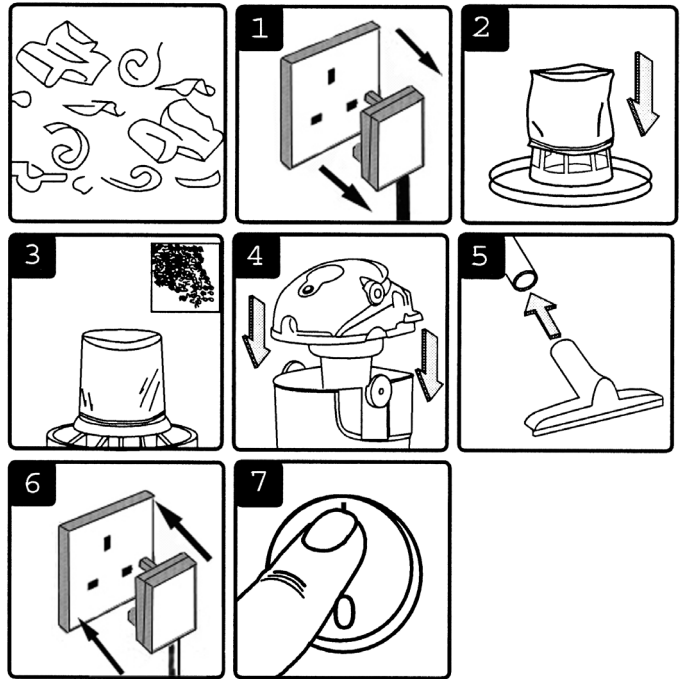
NOTE: Do not operate the cleaner without any filter fitted as this will damage the motor and invalidate your warranty.

- 4.6. Replace the power head onto the container ensuring that it is correctly seated.
- 4.7. Secure the head by turning the locking knobs anticlockwise.
- 4.8. Insert the flexible hose into the front inlet port below the on/off switch.
- 4.9. Connect the brush or crevice tool to the other end of the hose.
- 4.10. When vacuuming is complete the brush and crevice tools can be stored using the grooved stowage positions on either side of the power head.



5. DRY VACUUM CLEANING

- ❑ **WARNING! Ensure you read, understand and apply Section 1 'Safety Instructions'. Reminder: DO NOT vacuum hazardous substances. Use of an incorrect filter will invalidate your warranty.**
- 5.1. Whilst you are preparing the machine for use ensure that it is unplugged from the power supply.
 - 5.2. Remove the power head. Stretch the opening of the reusable cloth filter over the filter cage and push it down.
 - 5.3. Ensure that the filter completely covers the filter cage with the elastic portion stretched over the smooth ring of plastic at the base of the filter cage.
 - 5.4. Reposition the power head onto the container, and secure in place by rotating the two locking knobs.
 - 5.5. Insert the flexible hose into the front inlet port below the on/off switch. Push the required attachment onto the free end of the hose.
 - 5.6. Plug in the power supply.
 - 5.7. Switch the motor on (position 'I').
 - 5.8. When you have completed vacuuming, press the switch to 'Off' (position 'O'), and unplug from power supply. Regularly check the condition of the filter.



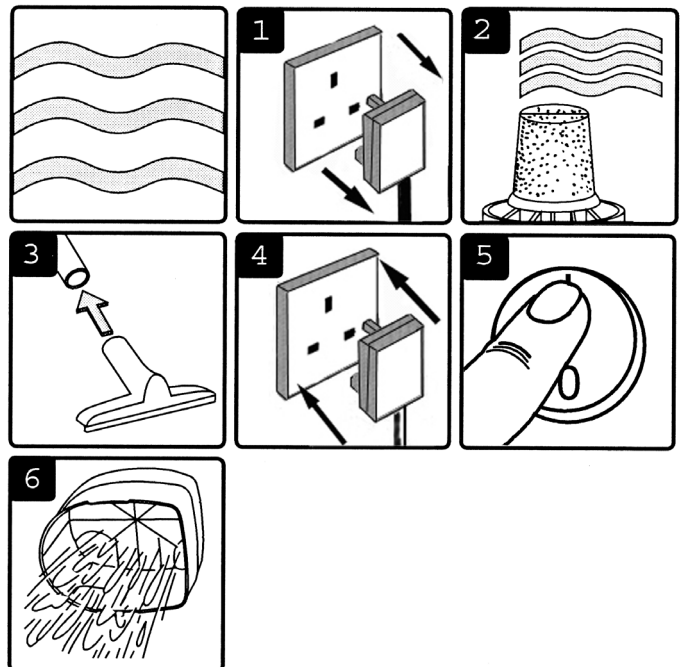
6. WET VACUUM CLEANING

- ❑ **WARNING! Ensure you read, understand and apply Section 1 'Safety Instructions'. Reminder: Remove plug from power supply before opening unit. DO NOT vacuum solvents, explosives, inflammable and/or hazardous liquids such as petrol, oil, spirits, paint, thinners, acids etc.**

- 6.1. Whilst preparing the unit for use ensure that the machine is unplugged from the power supply. Make sure the tank is clean and free from dust and dirt.
- 6.2. Remove the reusable cloth filter and fit the foam filter over the filter cage, replace the top section onto the container.
- 6.3. To the same flexible hose as used in dry cleaning fit the desired nozzle.
- 6.4. Ensure the switch is 'Off' (position 'O') before plugging into the power supply.
- 6.5. Press the switch to 'On' (position 'I').
- 6.6. After use, empty the tank and dry.

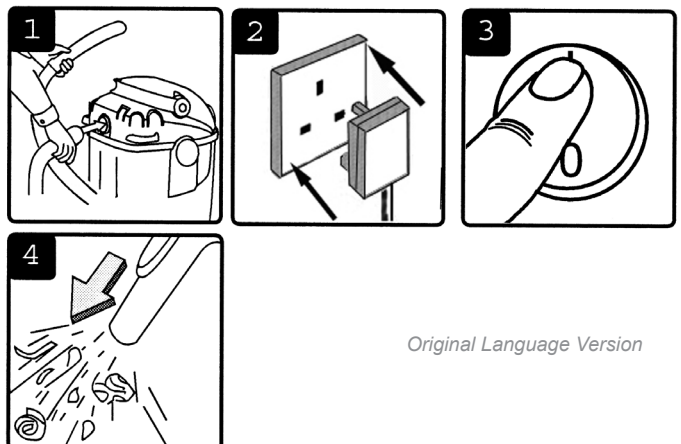
To vacuum large quantities of liquid, from a sink or tank etc., do not immerse the nozzle completely in the liquid, leave a gap at the top of the nozzle opening to allow an air inflow. The machine is fitted with a float valve which stops the suction when the tank has reached its maximum capacity. The user will notice an increase in motor speed. When this happens, turn off the machine, disconnect from power supply, remove the head from the container and empty the liquid into a suitable receptacle or drain. To continue vacuuming, refit the head and proceed. After wet vacuuming, turn the machine off and remove plug from power supply. Empty the container and clean/dry the inside and outside before storage.

Remember! After wet vacuuming the foam filter must be removed and a dry cloth filter must be fitted before dry vacuuming again.



7. BLOWING

- 7.1. Push one end of the flexible hose into the blowing outlet port in the back of the power head.
 - 7.2. Ensure the power switch is turned off and plug into the power supply.
 - 7.3. Switch on the power (position 'I').
 - 7.4. The unit will now blow through the hose and can be used to clear obstructions within the pipe.
- ❑ **WARNING! If after a few seconds the hose is still blocked turn off the unit and clear the hose manually.**

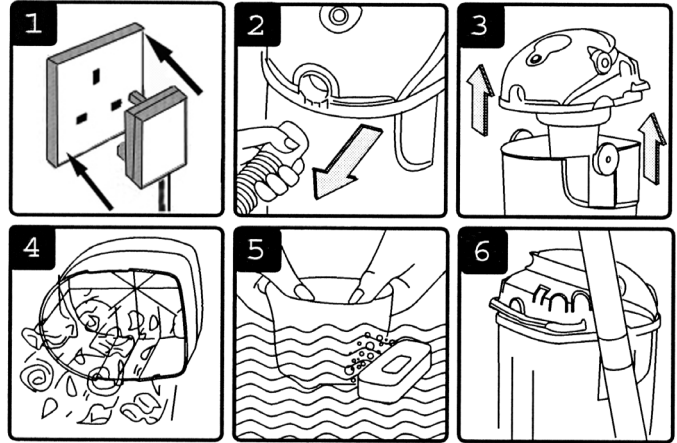


Original Language Version

8. MAINTENANCE

8.1 GENERAL MAINTENANCE.

- 8.1.1 Ensure the machine is unplugged from the power supply.
- 8.1.2 Disconnect the hose from the container.
- 8.1.3 Rotate the locking knobs and remove the power head from the container.
- 8.1.4 Clear out any dirt or debris from the container and hose.
- 8.1.5 Clean the foam filter or reusable cloth filter by washing it in a mild soapy solution. The cloth filter should be thoroughly dry before it can be used again.
- 8.1.6 Check that the hose and attachments are undamaged and also check the power cable. Any damaged parts should be replaced immediately.



9. CONSUMABLES

IMPORTANT! IF THE MACHINE IS USED WITHOUT A FILTER FITTED THE MOTOR WILL BURN OUT EVENTUALLY AND YOUR GUARANTEE WILL BE INVALIDATED. ALWAYS KEEP A SPARE FILTER HANDY.

Replacement Cloth Filter PC100.ACC4
 Replacement Foam Filter..... PC100.ACC2

10. TROUBLESHOOTING

Cleaner will not operate.	No power supply. Faulty power cable, switch or motor. Container full of liquid.	Check supply. Check and repair or replace faulty item. Empty container.
Dust comes from the motor cover.	Filter missing or damaged.	Fit or replace filter.
Reduced efficiency and increased motor speed/vibration.	Container full. Filter clogged. Nozzle, hose or container inlet blocked.	Empty container. Replace or clean filter (See maintenance) Check nozzle, hose and container inlet for blockage.

NOTE: It is our policy to continually improve products and as such we reserve the right to alter data, specifications and component parts without prior notice.

IMPORTANT: No liability is accepted for incorrect use of this product.

WARRANTY: Guarantee is 12 months from purchase date, proof of which will be required for any claim.

INFORMATION: For a copy of our latest catalogue and promotions call us on 01284 757525 and leave your full name and address, including postcode.



Sole UK Distributor, Sealey Group,
 Kempson Way, Suffolk Business Park,
 Bury St. Edmunds, Suffolk,
 IP32 7AR

01284 757500

www.sealey.co.uk

01284 703534

sales@sealey.co.uk