



INSTRUCTIONS FOR:

VACUUM CLEANER CORDLESS WET & DRY RECHARGEABLE 7.2V

MODEL NO: **CPV72**

Thank you for purchasing a Sealey product. Manufactured to a high standard, this product will, if used according to these instructions, and properly maintained, give you years of trouble free performance.



IMPORTANT: PLEASE READ THESE INSTRUCTIONS CAREFULLY. NOTE THE SAFE OPERATIONAL REQUIREMENTS, WARNINGS & CAUTIONS. USE THE PRODUCT CORRECTLY AND WITH CARE FOR THE PURPOSE FOR WHICH IT IS INTENDED. FAILURE TO DO SO MAY CAUSE DAMAGE AND/OR PERSONAL INJURY AND WILL INVALIDATE THE WARRANTY. KEEP THESE INSTRUCTIONS SAFE FOR FUTURE USE.

1. SAFETY

1.1. GENERAL

- ✓ Keep the vacuum clean and in good condition.
- ✓ Replace or repair damaged parts. *Use recommended parts only. Unauthorised parts may be dangerous and will invalidate the warranty.*
- ✓ Keep children and non-essential persons away from the work area.
- x **DO NOT** leave the vacuum operating unattended.
- x **DO NOT** use the vacuum for a task it is not designed for.
- x **DO NOT** operate the vacuum when you are tired or under the influence of alcohol, drugs or intoxicating medication.
- x **DO NOT** operate the vacuum if any parts are missing or damaged, as this may cause failure and/or personal injury.
- ✓ Stay alert, watch what you are doing and use common sense when operating vacuum.
- ✓ **DO NOT** allow persons unfamiliar with the vacuum or these instructions to operate the vacuum.
- ✓ Recharge only with the charger supplied.
- WARNING!** Sparks inside motor can ignite flammable vapours or dust. To avoid fire or explosion do not use near flammable or combustible liquids or gases.
- x **DO NOT** vacuum anything that is burning or smoking such as cigarettes, matches or hot ashes.
- x **DO NOT** vacuum toxic materials to avoid health hazards from vapours or dusts.
- ✓ Keep the vacuum and all accessories where they will not be subjected to heat or flame. To avoid injury, shock, or fire, never use a damaged vacuum, cord or charger.
- x Switch off immediately if foam or liquid exits the vacuum.
- x **DO NOT** put any object into openings.
- x **DO NOT** use with any opening blocked.
- ✓ Keep free of dust, lint, hair, and anything that may reduce air flow. Keep hair, loose clothing, fingers away from openings and moving parts.
- x **DO NOT** use for dry vacuuming without filter in place.
- x **DO NOT** use any charger other than the one with the vac.
- x **DO NOT** handle plug or charging unit with wet hands.
- ✓ Replace or repair damaged parts. *Use recommended parts only. Unauthorised parts may be dangerous and will invalidate the warranty.*
- WARNING!** The warnings, cautions and instructions in this manual cannot cover all possible conditions and situations that may occur. It must be understood by the operator that common sense and caution are factors which cannot be built into this product, but must be applied by the operator.
NOTE: This appliance can be used by children aged from 8 years and above and persons with reduced physical, sensory or mental capabilities or lack of experience and knowledge if they have been given supervision or instruction concerning use of the appliance in a safe way and understand the hazards involved. Children shall not play with the appliance. Cleaning and user maintenance shall not be made by children without supervision.

1.2. ELECTRICAL SAFETY FOR USE OF TRANSFORMER. **USE ONLY THE SUPPLIED TRANSFORMER PLUG FOR CONNECTING LAMP TO THE POWER SUPPLY.**

- WARNING!** It is the user's responsibility to read, understand and comply with the following electrical instructions:
You must ensure the risk of electric shock is minimised by the installation of appropriate safety devices. An RCCB (Residual Current Circuit Breaker) should be incorporated in the main distribution board. We also recommend that an RCD (Residual Current Device) is used with all electrical products, particularly portable equipment which is plugged into an electrical supply not protected by an RCCB.

You must also read and understand the following instructions concerning electrical safety.

1.2.1. The Electricity At Work Act 1989 requires all portable electrical appliances, if used on business premises, to be tested by a qualified electrician, using a Portable Appliance Tester (PAT), at least once a year.

1.2.2. The Health & Safety at Work Act 1974 makes owners of electrical appliances responsible for the safe condition of the appliance and the safety of the appliance operator. **If in any doubt about electrical safety, contact a qualified electrician.**

1.2.3. You must ensure that you:

- ✓ Inspect the transformer plug, cable and connector for wear and damage to ensure items are safe before connecting to the mains power supply. If worn or damaged **DO NOT** use.
- ✓ Important: Check that the voltage marked on the transformer plug is the same as the power supply to be used.
- ✓ Uncoil the cable between transformer plug and vacuum.
- x **DO NOT** pull the transformer plug from the mains socket by the lead.
- x **DO NOT** use any other type of transformer with this product.
- x **DO NOT** try to take the transformer plug apart.
- x **DO NOT** use the transformer plug to power any other electrical item.
- x **DO NOT** get the transformer plug wet, or use in wet, damp conditions (for indoor use only).
- WARNING! NEVER** substitute a standard 13amp 3 pin plug, or any other type of plug, for the transformer plug. This transformer plug reduces and rectifies the mains voltage (230 volts AC) to 7.2V.

2. INTRODUCTION

Ideal for quick clearing up of spillages. Convenient for use in the home, workshop or car. Built in crevis tool for wet and dry pick up. Includes detail brush, squeegee brush, storage bag and reusable filter. Features removeable collection chamber for easy disposal of waste.

3. SPECIFICATIONS

Model No:CPV72
Voltage:7.2V
Charging Time:3-5hr
Weight:0.8kg

4. OPERATION

4.1. BEFORE FIRST USE

4.1.1. Unpack all parts and check for completeness if anything is incomplete contact your dealer.

4.1.2. Charging the battery

DO NOT use the vacuum whilst it is being charged.

- charge the battery before first use.
- place the vacuum on a dry and even surface.
- make sure the vacuum is switched off (see fig.1).
- insert the plug of the adaptor into the charging socket (fig.1) plug the adaptor into a suitable charging socket and switch on, the red charge light will come on.
- the battery is charged automatically, charging time is 3-5 hours.
- only charge the battery when it is almost flat. This increases the durability of the battery.
- charge the battery at room temperature between 0° and 37°C.

4.2. VACUUMING METHODS

4.2.1. DRY VACUUMING (See fig.2).

- without the foldable crevice tool for dry dirt.
- with the foldable crevice tool for cleaning crevices, small corners and slots.
- with the foldable crevice tool and the detail brush for cleaning upholstery and cushions.

4.2.2. WET VACUUMING (See fig.3).

- without the rubber squeegee for damp dirt.
- with the rubber squeegee for small amounts of liquid.

Note: The maximum amount of liquid is indicated by MAX.

4.3. GENERAL OPERATION

- WARNING!** never use the vacuum cleaner without the air filter installed.
- WARNING!** Clean or change the air filter regularly for best performance. If after switching off, dust falls out of the appliance, it indicates that the dust container is full and needs to be emptied.
- WARNING!** Make sure the charging adaptor is disconnected from the charging socket.
- WARNING!** Make sure the On/Off switch is set to the Off position.
- WARNING!** Never immerse the motor part of the appliance into the water or any other liquid.

4.3.1. Switching On/Off (See fig.1).

- slide the On/Off switch to the on position.
- clean the dust, wet dirt etc. from the desired area and switch to the Off position.
- empty the vacuum when the dust container is full, or if the **MAX** mark has been reached by liquid. (Refer to Cleaning and Maintenance).

4.2. Emptying Dust Container (See fig.4).

4.2.1. Press the dust container release button (see fig.1) to release the dust container. Then remove the air filter and its holder from the dust container.

4.2.2. Hold the dust container over a bin and shake out the dry dirt or pour out the water into a suitable container.

4.3. Cleaning the Air Filter (See fig.4).

4.3.1. Remove the air filter from the dust container and clean it using warm soapy water. Then rinse under running water and let it dry.

4.3.2. Rinse out the dust container with water, dry all the parts thoroughly, and reassemble.

4.4. Storage

Store in a dry place away from moisture, direct sunlight and where it is inaccessible to children.

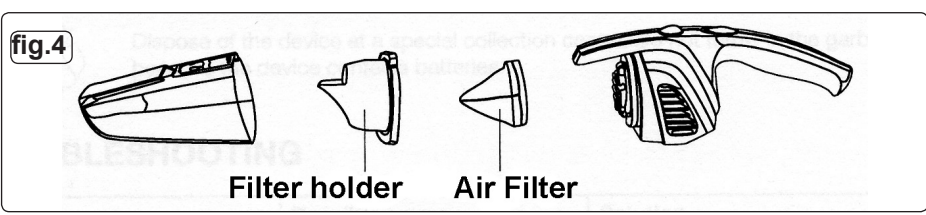
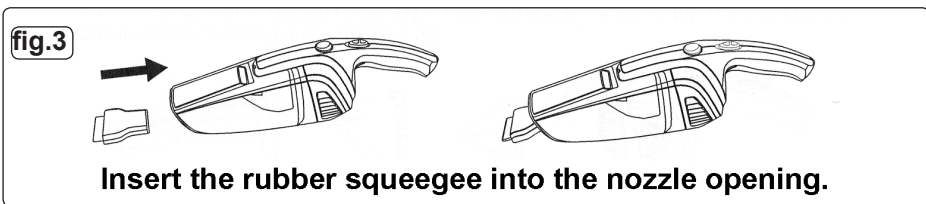
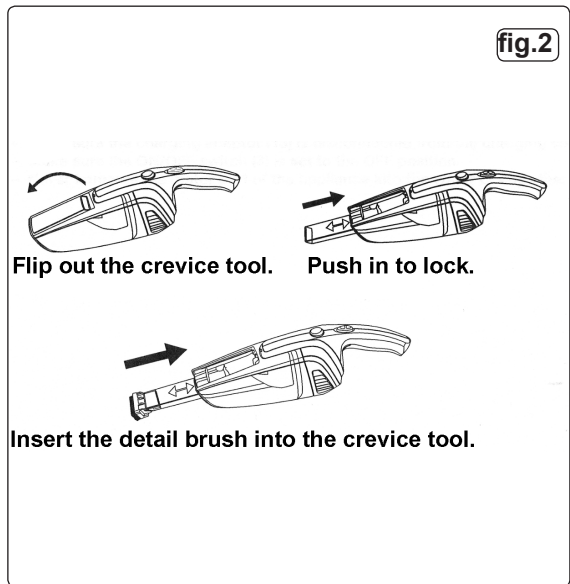
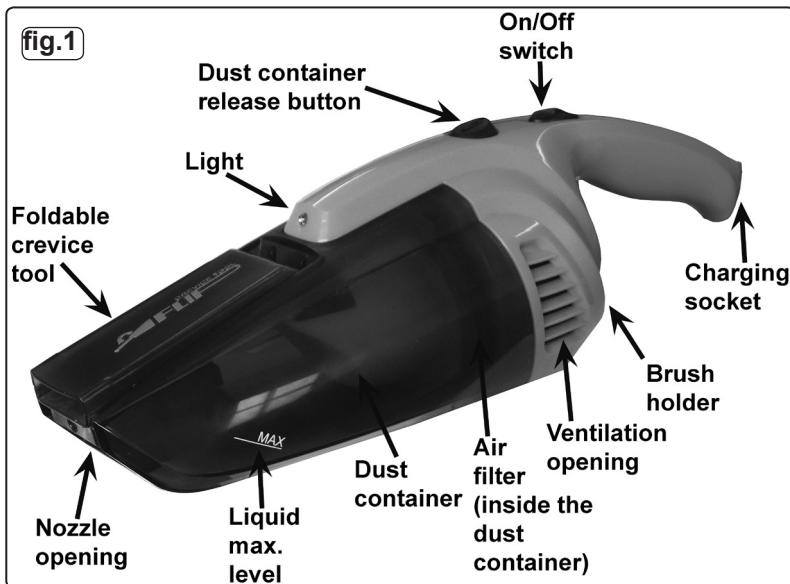
5. CLEANING

5.1. Cleaning

Clean the appliance after each use. Use a damp cloth and a mild cleaning agent to clean the surfaces of the vacuum cleaner. **DO NOT** use aggressive or abrasive cleaning agents, petrol, solvents, chemically treated cloths or other cleaning agents, they can damage the casing.

6. TROUBLESHOOTING

Problem	Possible Cause	Solution
Vacuum does not work.	Battery is empty. Dust container is full.	Charge battery. Empty dust container.
Vacuum cleaner is connected to the adaptor, but the battery is not charged.	Power adaptor is not connected to the power supply. The On/Off switch is set to the On position.	Connect adaptor to a suitable outlet. Slide it to the Off position.
The vacuum only works for a short time.	The battery is not fully charged.	Charge the battery.
The efficiency decreases or the motor vibrates.	The nozzle is blocked; or the filter is blocked by fine dust.	Check the nozzle opening; or clean/replace the filter.



Environmental Protection
 Recycle unwanted materials instead of disposing of them as waste. All tools, accessories and packaging should be sorted, taken to a recycling centre and disposed of in a manner which is compatible with the environment. When the product becomes completely unserviceable and requires disposal, drain off any fluids (if applicable) into approved containers and dispose of the product and the fluids according to local regulations.



WEEE Regulations
 Dispose of this product at the end of its working life in compliance with the EU Directive on Waste Electrical and Electronic Equipment (WEEE). When the product is no longer required, it must be disposed of in an environmentally protective way. Contact your local solid waste authority for recycling information.

Battery Removal

To disconnect the battery pack remove the 7 screws holding the two halves of the casing together, split the two halves, cut the wires to the batteries and dispose of batteries according to local authority guidelines.

Under the Waste Batteries and Accumulators Regulations 2009, Jack Sealey Ltd are required to inform potential purchasers of products containing batteries (as defined within these regulations), that they are registered with Valpak's registered compliance scheme.

Jack Sealey Ltd's Batteries Producer Registration Number (BPRN) is BPRN00705.

Parts support is available for this product. To obtain a parts listing and/or diagram, please log on to www.sealey.co.uk, email sales@sealey.co.uk or telephone 01284 757500.

NOTE: It is our policy to continually improve products and as such we reserve the right to alter data, specifications and component parts without prior notice.

IMPORTANT: No liability is accepted for incorrect use of this product.

WARRANTY: Guarantee is 12 months from purchase date, proof of which will be required for any claim.

INFORMATION: For a copy of our latest catalogue and promotions call us on 01284 757525 and leave your full name and address, including postcode.



Sole UK Distributor, Sealey Group,
 Kempson Way, Suffolk Business Park,
 Bury St. Edmunds, Suffolk,
 IP32 7AR

01284 757500



www.sealey.co.uk

01284 703534



sales@sealey.co.uk