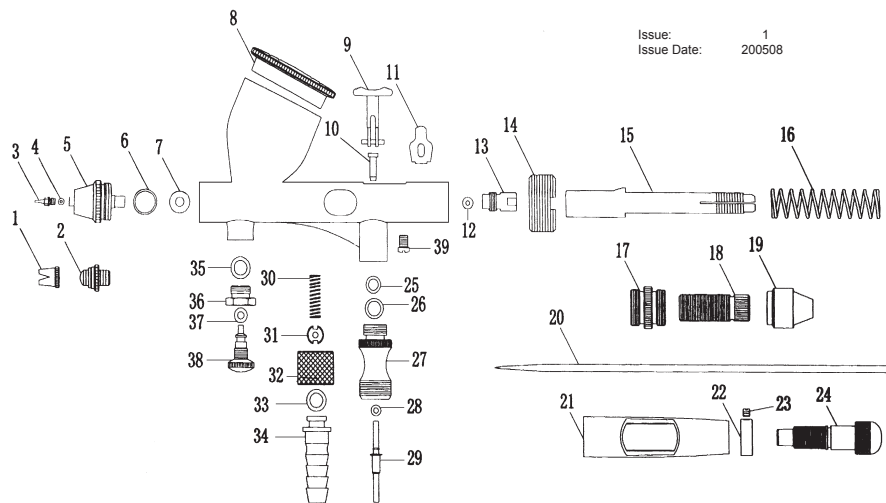







Issue: 1
Issue Date: 200508



ITEM	PART NO	DESCRIPTION	ITEM	PART NO	DESCRIPTION
1	AB933.01	NEEDLE CAP	21	AB933.21	HANDLE
2	AB933.02	NOZZLE CAP	22	AB933.22	BUSH
3	AB933.03	NOZZLE	23	AB933.23	GRUB SCREW
4	AB933.04	O-RING	24	AB933.24	ADJUSTING SCREW
5	AB933.05	AIR CAP BODY	25	AB933.25	O-RING
6	AB933.06	O-RING	26	AB933.26	O-RING
7	AB933.07	O-RING	27	AB933.27	VALVE BODY
8	AB933.08	LID	28	AB933.28	O-RING
9	AB933.09	LEVER	29	AB933.29	VALVE ROD
10	AB933.10	PLUG	30	AB933.30	VALVE SPRING
11	AB933.11	LEVER GUIDE	31	AB933.31	VALVE SCREW
12	AB933.12	O-RING	32	AB933.32	HOSE CONNECTOR NUT
13	AB933.13	NEEDLE GUIDE	33	AB933.33	O-RING
14	AB933.14	STOPPER	34	AB933.34	HOSE CONNECTOR
15	AB933.15	NEEDLE GUIDE	35	AB933.35	O-RING
16	AB933.16	SPRING	36	AB933.36	SET SCREW
17	AB933.17	LINK	37	AB933.37	O-RING
18	AB933.18	SPRING CASE	38	AB933.38	ADJUSTER
19	AB933.19	NUT	39	AB933.39	SCREW
20	AB933.20	NEEDLE			

NOTE: It is our policy to continually improve products and as such we reserve the right to alter data, specifications and component parts without prior notice.
IMPORTANT: No liability is accepted for incorrect use of product.
WARRANTY: Guarantee is 12 months from purchase date, proof of which will be required for any claim.
INFORMATION: For a copy of our latest catalogue and promotions call us on 01284 757525 and leave your full name and address, including postcode.


Sole UK Distributor
Sealey Group,
 Bury St. Edmunds, Suffolk.
  **01284 757500**
 **01284 703534**

 www.sealey.co.uk
 sales@sealey.co.uk

AB933 Issue No: 1 - 02/04/08

Thank you for purchasing a Sealey Product. Manufactured to a high standard this product will, if used according to these instructions and properly maintained, give you years of trouble free performance.

IMPORTANT: PLEASE READ THESE INSTRUCTIONS CAREFULLY. NOTE THE SAFE OPERATIONAL REQUIREMENTS, WARNINGS AND CAUTIONS. USE THIS PRODUCT CORRECTLY AND WITH CARE FOR THE PURPOSE FOR WHICH IT IS INTENDED. FAILURE TO DO SO MAY CAUSE DAMAGE AND/OR PERSONAL INJURY AND WILL INVALIDATE THE WARRANTY. PLEASE KEEP INSTRUCTIONS SAFE FOR FUTURE USE.

1. SAFETY INSTRUCTIONS

- WARNING!** Ensure that Health and Safety, local authority and general workshop practice regulations are adhered to when using tools.
- WARNING!** Air brushes produce a fine mist of paint and solvents which may be harmful by inhalation. Always wear suitable protective breathing equipment which can be obtained from your local Sealey Dealer. For a better understanding of the risks involved with any particular paint or solvent read the warnings on the containers and follow the advice given.
- ✓ Also take measures to protect the eyes and skin from contact with paint and solvents. A full range of personal safety equipment is available from your Sealey Dealer.
- ✗ **DO NOT** operate the air brush near other people unless they are wearing the same protective equipment.
- ✗ **DO NOT** eat or drink when using the air brush.
- ✗ **DO NOT** allow smoking or open flame in the work area.
- ✓ Ensure that the air brush and accessories are in a clean, sound condition and good working order. Take action for immediate repair or replacement of damaged parts. *Use recommended parts only.*
The use of unauthorised parts may be dangerous and will invalidate the warranty.
- ✓ Ensure the air brush supply hose is not tangled, twisted or pinched.
- ✗ **DO NOT** use air brush or accessories if damaged.
- ✗ **DO NOT** operate air brush while under the influence of drugs, alcohol or intoxicating medication, or if fatigued.
- ✗ **DO NOT** direct spray against yourself, other persons or animals or electrical equipment.
- ✗ **DO NOT** use the air brush for a task it is not designed to perform.
- ✓ Always ensure adequate ventilation in the work area.
- ✓ Always disconnect from the air supply before dismantling the air brush for cleaning and maintenance.
- ✗ **DO NOT** leave the air brush connected to the air supply when unattended.

2. INTRODUCTION

Metal body construction with built-in gravity feed pot and 0.25mm nozzle. Features a double-action trigger providing precision control over paint flow, which allows for a professional finish. Supplied in storage case.



3. ASSEMBLY

3.1. Attach a suitable air hose onto the air hose connection underneath the air brush trigger and the other end onto the air supply.

NOTE: The maximum air supply to the air brush should never exceed 45psi. Normal operating pressure is approx 30psi.

AB933 Issue No: 1 - 02/04/08

4. OPERATING INSTRUCTIONS

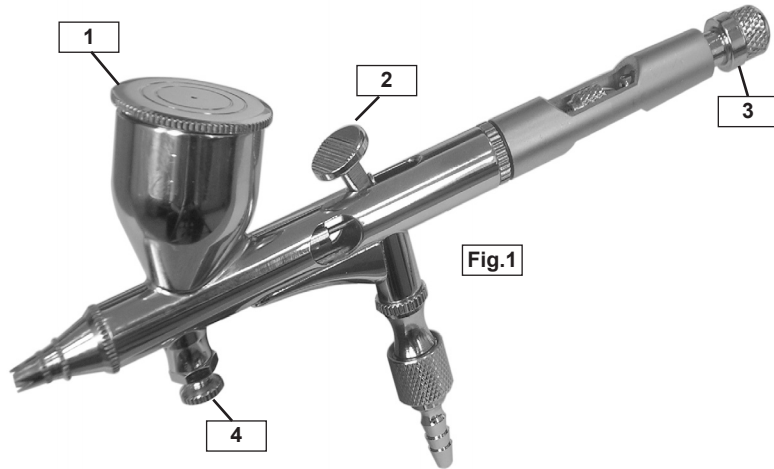


Fig.1

WARNING! ENSURE ADEQUATE VENTILATION. **DO NOT** SPRAY NEAR NAKED FLAMES.

- 4.1. Mask the area which is **NOT** to be painted.
- 4.2. Ensure the object to be painted is free from dust, grease and the surface has been prepared.
- 4.3. After mixing and thinning the paint, as instructed by the paint manufacturer, fill the paint cup (Fig.1.1) just over half full.

Note: Mix thoroughly, making sure that the paint is free from lumps. It may be necessary to strain the paint first.

- 4.4. Turn the air ON and test your spray on a test panel to get the "feel" of your air brush. Holding the air brush about 6 inches from the surface press the trigger (Fig.1.2) down and gradually draw back moving the air brush at a steady rate, parallel to the surface, (Fig.2). For the best result start the motion before pressing the trigger and a follow through motion after releasing the trigger, (Fig.3).
- 4.5. Make any necessary spray adjustments. The paint spray pattern can be adjusted by turning the air adjusting screw (Fig.1.3). The air adjusting screw is fully closed when it has been turned clockwise to the stop point. The volume of paint dispensed can be adjusted by varying the backward movement of the trigger (Fig.1.2) and can be pre-set using the micro adjust screw (Fig.1.4).
- 4.6. Apply paint in accordance with the paint manufacturers guidelines. Continue with this method until the desired coverage is reached. **DO NOT** spray too heavily.

Note: When using quick drying paints, it is advisable to clean or immerse the fluid end of the air brush in a compatible solvent between sprays.

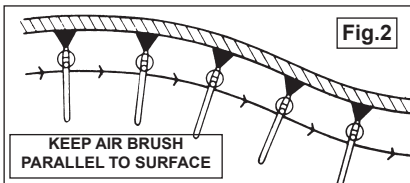


Fig.2

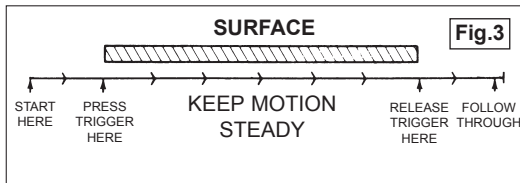


Fig.3

5. CLEANING & MAINTENANCE

The air brush should be thoroughly cleaned immediately after each operation.

- 5.1. Empty the paint cup and flush with a suitable solvent.
 - 5.1.1. Fill the paint cup half full of a compatible solvent.
 - 5.1.2. Spray the solvent into a suitable container, this will clean the needle and nozzle assembly. Hold a soft cloth over the needle cap and spray again, this will force air and the compatible solvent back through the air brush and clean the internal moving parts.

- 5.2. Should the air brush become clogged with paint, dismantle the air brush and clean the component parts as follows: (Note: Numbers in brackets refer to item numbers on the parts diagram).
 - 5.2.1. Turn off the air and disconnect the air hose from the air brush.
 - WARNING!** The fluid needle has a long sharp point and great care should be exercised when handling it.
 - 5.2.2. Unscrew the adjusting screw (24) and the needle locking nut (19) within the adjusting handle, unscrew the adjusting handle (21) and carefully slide off the needle.
 - 5.2.3. Remove the needle locking guide (15) and spring (16) and carefully withdraw the fluid needle (20) and place it somewhere safe to avoid bending it or damaging the sharp point.
 - 5.2.4. Unscrew the needle cap (1) from the nozzle cap (2).
 - 5.2.5. Loosen the nozzle assembly (3) with the spanner provided and unscrew it. If the nozzle needs to be soaked in solvent remove the O-ring (4) as it may be damaged by the solvent.
 - 5.2.6. Unscrew the air cap body (5) and remove O-ring (6).
 - 5.2.7. The trigger (9) and lever guide (11) will be loose once the needle has been removed, take care to note the correct position for the lever guide as the air brush will not operate properly if this guide is not the correct way round.
 - 5.2.8. To remove the needle guide (13), remove screw (39) and undo the stopper (14), the needle guide can then be removed.
 - 5.2.9. Any components with dried paint on them should be cleaned with a solvent suitable for the paint last used and may need to be soaked for a while before the paint will come off. Take great care not to bend the needle when cleaning it and avoid the sharp point.
 - 5.2.10. The air inlet valve (25 to 34) and the fluid adjusting valve (35 to 38) assemblies can be removed and cleaned without having to dismantle the main air brush, refer to parts diagram for order of assembly
- 5.3. Reassemble the cleaned air brush in the reverse order. Check the condition of any O-rings and replace if damaged. Take care refitting the fluid needle, **DO NOT** force or overtighten as this may damage the seat or the needle.

6. TROUBLESHOOTING

THE PROBLEM	THE CAUSE	THE SOLUTION
Paint Runs.	Too much paint applied. Moving air brush too slowly along workpiece.	Press trigger lightly. Move at a faster speed.
Grainy Spray.	Paint too thick. Dried paint deposits on tip, needle or regulator.	Thin paint. Clean air brush, as described above.
Paint Splattering.	Needle snapping back into tip.	Release needle gently.
Curved Stroke.	Air brush not being kept parallel to work.	Keep air brush parallel to the work, unless curved stroke is desired.
Paint Spitting.	Needle snapping back into tip. Paint too thick.	Release needle gently. Thin paint.
Restricted Spray.	Air adjusting valve screwed in too tight. Paint tube in pot clogged.	Loosen the air adjusting valve to obtain the correct spray. Clean as described above.
Bubbles in Paint Cup.	Air adjusting valve out too far. Paint tube in pot clogged.	Adjust air valve to eliminate bubbles. Clean as described above.
Erratic Spray.	Fluid needle bent or paint deposits on needle.	Replace needle or clean as required.

NOTE: It is our policy to continually improve products and as such we reserve the right to alter data, specifications and component parts without prior notice.

IMPORTANT: No liability is accepted for incorrect use of this product.

WARRANTY: Guarantee is 12 months from purchase date, proof of which will be required for any claim.

INFORMATION: For a copy of our catalogue and latest promotions call us on 01284 757525 and leave your full name, address and postcode.

	Sole UK Distributor Sealey Group, Bury St. Edmunds, Suffolk.	01284 757500 01284 703534	www.sealey.co.uk sales@sealey.co.uk
--	--	------------------------------	--